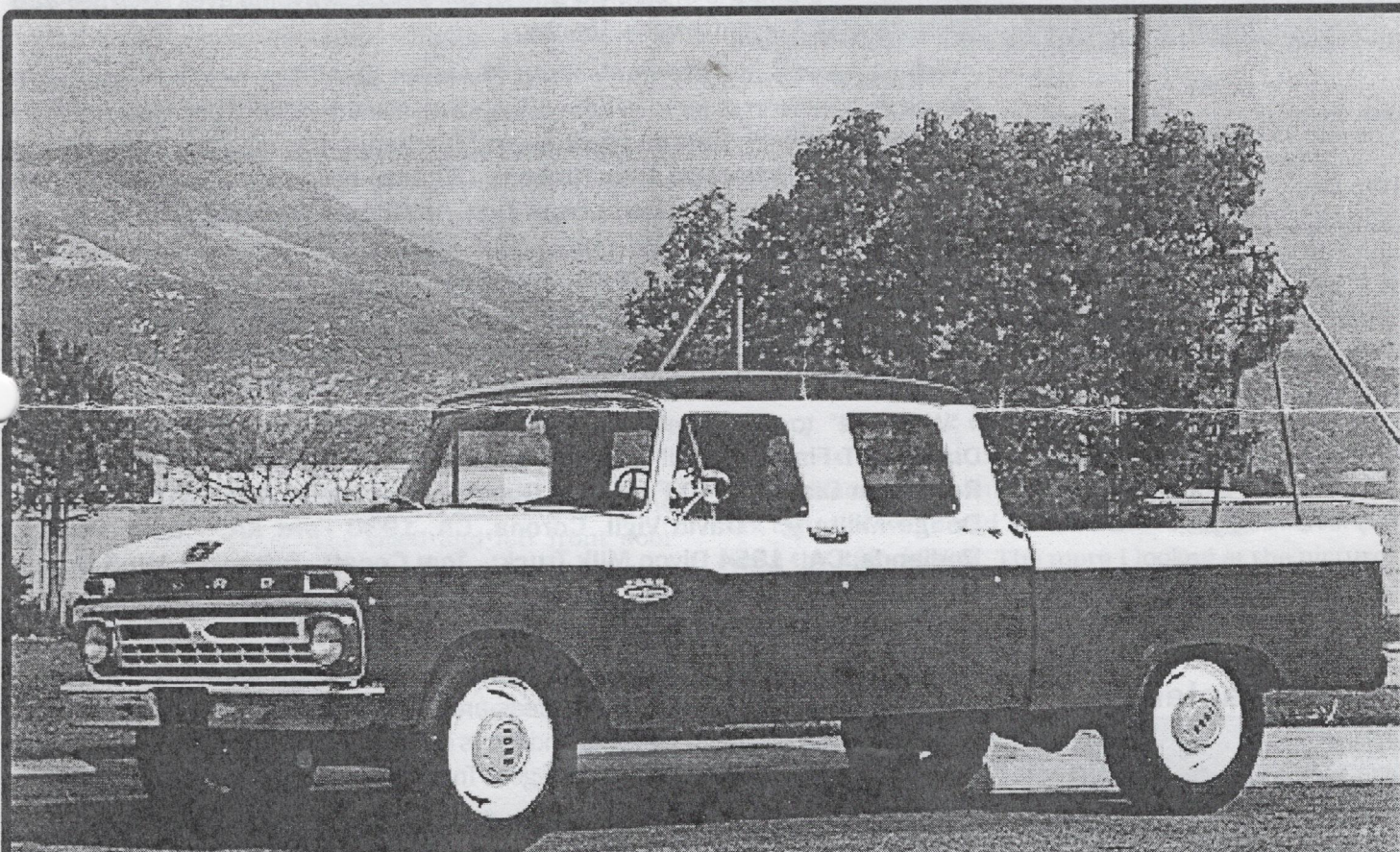


American Truck Historical Society  
Volume Sixteen Number One

Southern California Chapter  
January/February 1996

# Express Newsletter



*Ron Berg's '66 Crew Cab Ford Pick Up - Ron Berg*

*President's Message - Mark Christensen*

*Secretary/Treasure Notes - Ken Lund*

*1996 Whittier Truck Show Registration Form*

*Your Truck and Taxes - Richard A. Eustice*



**American Truck  
Historical Society**

**Southern California  
Chapter**

1995 Officers and  
Board Members

President

Mark Christensen (909) 883-1955

Vice President

Ron Berg (909) 880-1807

Secretary/Treasurer

Ken Lund (909) 794-2616

Historian

Bob Kennison (714) 997-5767

Editor

Dan Gosnell (909) 883-1091

Board Members

Tom Bell (310) 867-6711

Doug Graft (714) 639-5319

Leigh Knudson (714) 645-5938

Larry Laughlin (909) 794-5394

Herb Deeks (714) 774-7326

Rich Yost (909) 881-5526

The "EXPRESS NEWSLETTER" is published six times per year by the Southern California Chapter of the American Truck Historical Society.



**ATHS**

**Southern California  
Chapter**

**General Chapter  
Meeting**

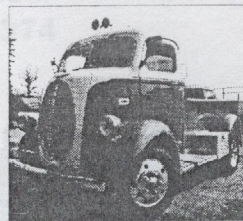
**February 21  
7:00 p.m.**

**Bob Kennison's**  
173 N. Pine St., Orange, CA  
(714) 997-5767

Calif. Thomas Bros. Map  
Page 196, D-1

Contact Pres. Mark Christensen  
for agenda items.

**PRESIDENT'S MESSAGE**



Well, we made it to 1996, another year has gone by. That means 1971 trucks are the new boys on the block. There are lots of exciting events coming up, the Truck Show and others. We need to start getting serious about planning for the Show. If anyone has an idea or wants to volunteer to help, please give me a call. We still need your pictures and stories about your trucks for the newsletter. Send them to

the Editor. I know that there have been a few trucks that have gotten put together this winter and I think we are all excited to see these "new" old trucks.

It was nice to see a lot of new and old faces at the December 3rd meet at Gunther's Yard. And it was nice to talk to all of you. I hardly had a chance to get to look at some of the new comers vehicles. I think everybody had a good time, and I think this was one of **George and Betty's** biggest events ever. **George and Betty**, you outdid yourselves—Thanks.

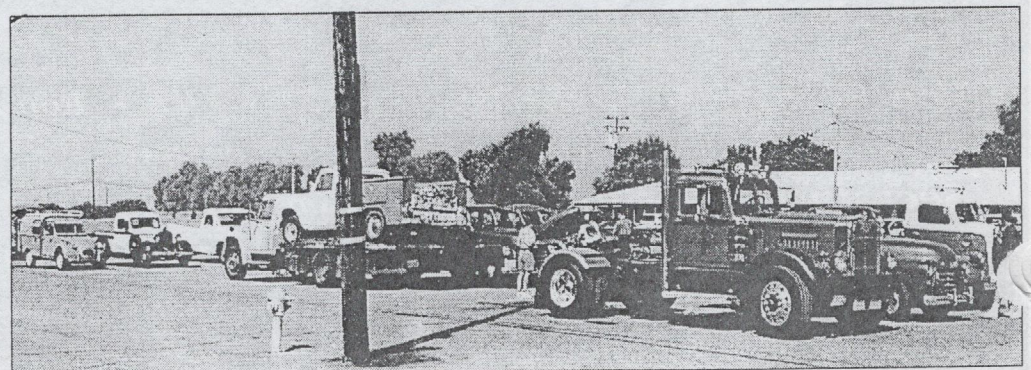
Well we arrived at **Peterson's Auto Museum** about ten o'clock. We met a Corvair club there in order to get the discount on the admission, and we went in all different directions! The museum seems to change the displays from time to time. This time, they had **Billy Gibbons (ZZ Top)** collection of cars and bikes. Boy were they nice. They had one of **Don Prudomes** first dragsters. They are sure different from the new ones. The **Spirit of America** was also there. Motorcycles, old and new, dry lake tank cars, custom Cadillacs, just to name a few, were also on display. I think everyone in attendance had a good time. Afterwards, we went down town to **Philippe's**, a very nostalgic eatery. It felt like you were back fifty years when you went in. It made a great ending to an exciting day.

"Welcome" to some new members: **Bill Goddard, Moreno Valley, 1945 Diamond T Flatbed; Bill Todd, Redlands, 1953 Chevy 3100 PU; Carlos Royal San Diego, 1940 Ford COE Dump; Jim Neises, Mentone, CA, 1941 Dodge Military; David Vigil, Corona, CA, 1930 Ford AA; Mike Palmer, Redlands, CA, 1954 Divco Milk Truck; Tom Conaty, Torrance, 1965 Dodge D200/1955 Chevy Cameo.** I hope to see you at our events. Let's be sure to introduce ourselves and make them feel welcome.

I hope to see all of you at **Bob Kennison's** so we can get serious about planning the Truck Show and throwing some ideas around. We need help with ideas about where to display posters, banners and flyers and generally getting the word out to the public, we want this to be the biggest Truck Show ever.

See you February 21st at **Bob and Polly Kennison's** at 7:00 p.m.,

*Mark*



*Some of the trucks at the SCC-ATHS October Turnaround. "Breakfast at Flo's."*

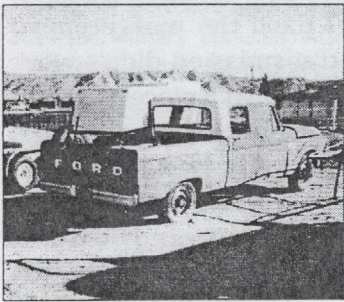
# Ron "Stretch" Berg's 1966 Ford Crew Cab Pick Up

With my family growing, I decided to look for a truck that had room for all four of us, not too big on the outside and comfortable enough to be a daily driver. I love old railroad trucks because they usually have tall, skinny wheels and tires and a lot of the time are crew cabs. That was what I decided to try and get. Well, railroad trucks are hard to find! So I decided to expand my search a little to include any crew cabs with short beds from the mid-sixties and older. I wanted either a Chevy or a Ford to make restoring easier because of the availability of after market parts.

One Sunday, in early January, my friends and I went on a scouting trip. We got all the way out on the other side of Bakersfield (a long way from San Bernardino) when Jim asked me exactly what I was looking for. After I explained, he commented how he drives by a 4-Door short bed Ford everyday on his way to work. Even better, he said it's in a backyard and hasn't moved in years. What the heck are we doing in Taft? We got back to Hesperia, where Jim lives, at dusk and we drove by where the truck sits.

There it was, dimly lit by our head lights, way in the rear of the back yard. The hood and left front door were slightly askew, the paint was badly oxidized, and appeared to be orange. We drove around the block to

see if the front was visible from that angle but it was hard to see anything except the general outline.



*Stretch's 1966 Ford when he found it.*

Fortunately that week I was in Hesperia and the second time I came to the house somebody was home. I found out the truck belonged to the owner of the property

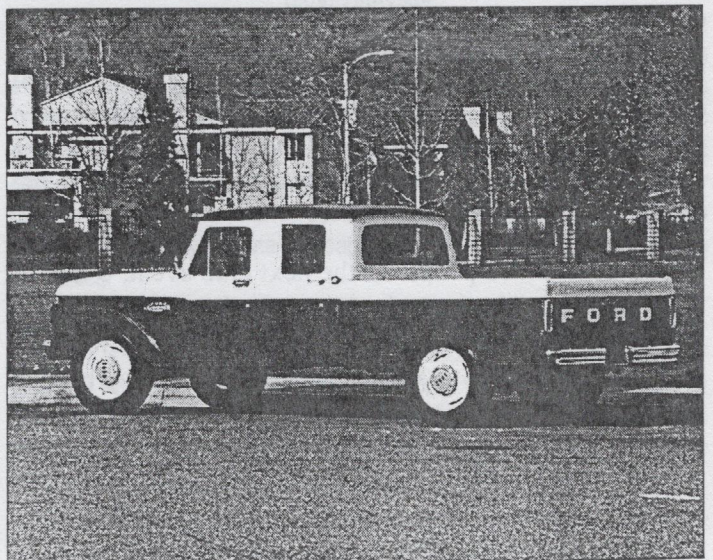
who lived out of state. The people living at the house would not let me have the phone number. They were pretty sure that he would sell the truck, and they would ask him next time they spoke to him. They gave me permission to look at the truck. The good news was the bed was straight, most of the pieces were there and it was an automatic. The bad news was the roof was dented bad enough to break out the windshield, it



*Front View of the Berg's Family Grocery Getter*

was a six cylinder and the steering and brakes weren't power. Oh yeah, and it was kind of ugly.

I checked back with the tenants every couple of weeks, but to no avail. I began to suspect I was getting the runaround because the tenants claimed they never saw the landlord anymore and he was a very busy person. Meanwhile I researched the truck. 1965 was the first year for Ford to offer the crew cab direct from the factory. This truck was a 1966. Previously, crew cabs were custom built by one of several coach builders authorized to perform the modifications. The 300 cid six cylinder was rated at more horsepower and torque than the 292 cid V-8. The more I looked at the pictures the more I wanted this truck. I looked up the owner of  
*(Continued to next page)*



*Rear View of 1966 Ford Crew Cab Pick Up*

## MINUTES of DECEMBER 1995 MEETING

Bank Balance as of 12/29/95 \$3537.64

The last meeting of the year was held on December 3, 1995, at "Gunter's Yard" in Long Beach and called to order at 1:40 p.m. by President *Mark Christensen*. Also in attendance were *Ken Lund, Barry Queen, Ron "Stretch" Berg, Tom "Thad" Porter, Leigh Knudson, Jim Wantland, Jim Wantland Sr., Dick Tait, Jim Wade, Dan Gosnell, Doug Graft, Ron Dohi, Larry Laughlin, Herb Deeks, Jim Helmuth, and Jerry Haworth*. Also present were two guests, *George D'Isabella* and *Bruce Fredrick*. Other members at the meet, but they did not stay for the meeting, were *Roland Smith, Steve Sackett, and Carl Stephenson*.

This was the annual "Gunter's Yard" meet where SCC-ATHS and other clubs meet to look at the vintage machinery, ride the railroad "speeder," and have hot dogs. Those in attendance are also encouraged to bring toys for the "Toys for Tots" program, and food for the **Salvation Army**, "Operation Christmas" program. A rough count of **19 trucks, 12 military vehicles (incl. trucks), 13 Harley Davidson motorcycles, 9 Model "T"s, various cars (2 Packards, and Carl Stephenson's Chrysler Airflow), and stationary engines**. The Inland Empire group made an impressive entrance with a caravan of six trucks.

A special thank you is in order for "Fireman" *Dan Gosnell*, who with his 1947 Ford US Forest Service fire engine was the first at the scene to save a Mercedes from becoming only a charred memory along the 91 freeway on our return trip. This should be a "wake-up call" for everyone to have a **working fire extinguisher** in every vehicle you drive!

The first order of business was charitable donations. We voted to donate \$100 to the **Salvation Army "Operation Christmas,"** and \$500 to **National ATHS for the "Home of our Own" fund.**

Next we discussed the mobile storage unit (trailer), but no definite action was taken. We have access to axles and a frame. If anyone has photos of "old" trailers or ideas, or any old fenders, lights, etc. they would like to donate to the cause, please let Mark know.

Next we reminded people of the next club event, a tour of the **Peterson Museum** in Los Angeles, on Saturday, **January 20, 1996**. To insure a group discount, we have invited another club to attend. As a group we may be able to have the \$4 parking waived, we'll see. **All members, friends, neighbors, etc. are welcome.** Please plan to meet at the museum (6060 Wilshire Blvd. at Fairfax) at 9:45 AM. After the museum tour, we can decide where to have lunch. The Peterson is located on "Museum Row," along with the Los Angeles County Museum (featuring Egyptian artifacts thorough Jan. 21), The La Brea Tar Pits/Page Museum, and

the Museum of Miniatures.

The last topic was a discussion of the Truck Show trophies. *Doug Graft* volunteered to head the trophy committee. We inspected the collection of "trophy tops" (donated parts) for the 1996 trophies. The collection included: a piston, pulley, clutch disk, carburetor, gear, hubcap, light, "wobble" plate pump assembly, fire nozzle, threaded fire hose coupler, and a vintage metal "road flair" can, which earned **Leigh Knudson** free membership for 1996. With these parts and Doug's help, we are ahead of schedule for the May show. The meeting was adjourned at 2:15 p.m.

Respectfully submitted,

*Kenneth N. Lund II, Secretary/treasurer*

### *Continued from "Ron Berg's 1966 Ford..."*

the property at the county assessor's office (public knowledge). The first time it came up with the owner's name and an address in Upland. The tenants said he lived out of state. Researching by name, I got a PO box and an address in Bullhead City, Arizona. I sent letters to both places, but received no reply. My wife and I had planned a trip to go water skiing in Laughlin, Nevada. I decided to take a side trip to Bullhead City. I obtained a map of Bullhead, and found the correct street. We drove to the house. The lady who answered the door turned out to be the owner's girlfriend. She quickly phoned the owner and after a short discussion, we settled on a price of \$500.

I picked the truck up on July 4th. Restoration started shortly after I got it home. I fixed the roof, prepped and painted the truck. The transmission didn't work correctly, so I had it rebuilt. It was just a piece of gasket blocking a valve port. A new radiator, tune up, belts and hoses and a rebuilt carburetor finished the engine. New wheel cylinders and grease seals were all the drive train needed. I had the seats recovered, chrome repeated and I did the headliner myself. I got all the little odds and ends and a windshield from the junk yard. After it was running I found I had to replace the gas tank because of rust. The rear drive shaft turned out to be bent and had to be retubed. My wife surprised me for Christmas by registering the truck in secret, which is really great because I was going nowhere with it. It now runs great and I enjoy driving it a lot as do my two daughters like riding in it. I have spent one year dwelling on this truck. Half of it getting the truck and the other half restoring it. It's been fun and it pays not to give up.

**TELL A FRIEND."** Included in this newsletter are windshield wiper reply cards. We could double our membership if each member got one additional person to join. If you would like more cards or flyers, contact Ken Lund (909) 794-2616.

**We have flyers and other literature available to promote our club and the Truck Show.** Please contact Mark Christensen (909) 883-1955 or Ken Lund (909) 794-2616. If you plan to attend an event and want any of these items, give them a call and they will bring them.

**Be sure to send in your '96 dues. When you do, jot down a note updating your truck(s) make and model(s).** Ken is planning to compile a roster of chapter members, addresses, phone numbers and truck information.

**Home Page:** For those computer nerds who surf the wide world web, National ATHS has a home page now. We're not sure what is on it yet or if it will carry any Chapter stuff. There should be something about it in the next "Wheels of Time." If anyone wants to try it out, the page address is <http://www.the-matrix.com/aths/truck.html>

**If anyone has any ideas/suggestions for this year's Truck Show,** bring them to the meeting or contact your nearest Board Member. Please tell any potential vendor to contact Leigh Knudson (714) 645-5938.

**We need everyone to get sponsors for raffle prizes for the Truck Show.** Canvas your area and work on those businesses. If you need a letter or formal request, contact Ken Lund (909) 794-2616.

**The next General Chapter Meeting will be held February 21 at 7:00 p.m.** at Bob Kennison's 173 N. Pine St., Orange, CA (714) 997-5767, Calif. Thomas Bros. Map Page 196, D-1. Just a reminder that Bob is the Chapter Historian. If anyone has extra photos of past events, bring them to Bob's. He will be more than happy to file them for us. Also, Bob has an extensive file of truck photos, including chapter member's trucks. If you haven't sent Bob some photos of your truck(s), make sure he gets a copy.

**The 1/87th Scale Vehicle Convention will be held March 23,24 and 25,** at the Red Lion Inn in Ontario (Vineyard Ave/I-10). Display day will be the 24th from 10:00 a.m. to 5:00 p.m. Numerous old and new vehicles will be on display, including Castle Park trucks, Stater Brothers' "Diamond T", Fageol Generator Truck from the Movie Studios, 28 Ford Bus, assorted Military Vehicles, AC Mack, and much more. For more information contact Bill Goddard (909) 247-7136.

**The '96 Truck Show T-Shirts will soon be available. The design has been finalized.** See the Truck Show registration sheet graphics in this newsletter. The T-Shirts will be in color and the trucks will be in the near original colors as possible. Order your T-Shirt now, be the first on your block to have one. Contact Mark Christensen or Ken Lund. T-Shirts will also be available during the show May 5th from the vendor "California Casuals."

**TRUCK TIP.** I recently got my Ford truck running and started to drive it daily. I wanted to be able to change a tire in the event of a flat. I didn't get a jack with the truck, and I had no idea what the stock jack looked like or where it was mounted. I dislike bumper jacks and scissor jacks can be a pain if they are stiff. I had a new 6 ton bottle jack that seemed perfect, however, I needed to mount it somewhere. My 66 Ford had large, flat inner fender panels with a lot of empty room. I had to figure out how to mount the bottle jack so it was easy to get to yet still held securely in place. My answer took the form of a fire extinguisher mount. Unscrewing the threaded portion of the lack's ram slightly allows it to slide onto the fork of the mount that normally holds the neck of the

extinguisher. The band fits around the jack the same way as the extinguisher. The mounts are light weight and very adaptable, with a variety of mounting holes. Fire extinguisher mounts can be purchased at Home Depot for about \$5. Two spring loaded broom handle clips suffice to secure the handle. It looks like the mount was made for the bottle lack and keeps it secure and accessible. "Stretch"

**Send in your Truck feature articles and pictures. Don't be afraid to toot your own air horn.** We can rewrite it in third person if you like. People won't know much about your truck if they only see it at the Show and you're off talking to somebody else. Send them to the Editor!!

**At the March 16 Pre-Planning Show Meeting in Whittier,** half of the meeting will be at Rocky Cola Cafe and half as a walk through at the show site, California High School. Ken L. is working on getting some of the press there as a photo shoot to advertise the Show. Be sure and bring your truck. Last year the Whittier paper came out. This year Ken is trying to get other local papers to show up.

**TECH TIP.** If you are out somewhere and you develop a small gas leak from your gas tank, you can rub bar soap on the leak and this will stop the leak for several days. "Mark"

**Wanted: Older style flatbed. 11' plus. Any condition. Needed to complete truck.** Contact *Doug Graft, (714) 639-5319.*

**For Sale: Military type truck bed. Approx. 14', Good condition. Make an offer or trade.** *Paul Ditzen, San Dimas, (909) 599-9557*

**Wanted: '41-'46 1/2 -3/4 ton Chevy truck front fenders.** *Dave Edgars, Silverado, CA (714) 649-2697.*

**For Sale: 1951 Chevy Pickup. Body real good except left rear fender needs some work. Runs good. 6 cyl. 3 speed on column. Everything stock. \$1500.** Contact *Ed Shepard (909) 677-1459.*

## TURN YOUR TRUCK INTO LEGITIMATE TAX DEDUCTIONS

by

**RICHARD A. EUSTICE**

INLAND EMPIRE FINANCIAL SERVICES  
1015 E. COLTON AVENUE, REDLANDS, CA 92374  
(909) 798-1584

According to the IRS, any activity conducted on a regular basis with the intent to make a profit is a business, but you are not required to make a profit to claim the tax deductions derived. For tax purposes, in order to operate as a business you must have a product or service which you offer regularly to the public. To make your-truck deductible, carefully choose any business idea or activity based on your interests, abilities and the amount of your time and capital you want to spend, incorporating your truck.

Intent to make a profit is what differentiates a "business" from a "hobby". A hobby is an activity that may produce income, but is operated for pleasure without the intent of making a profit. You can show your intent to operate as a business by talking regularly to potential or actual customers and keeping a list and by keeping detailed records of your income and business related expenses.

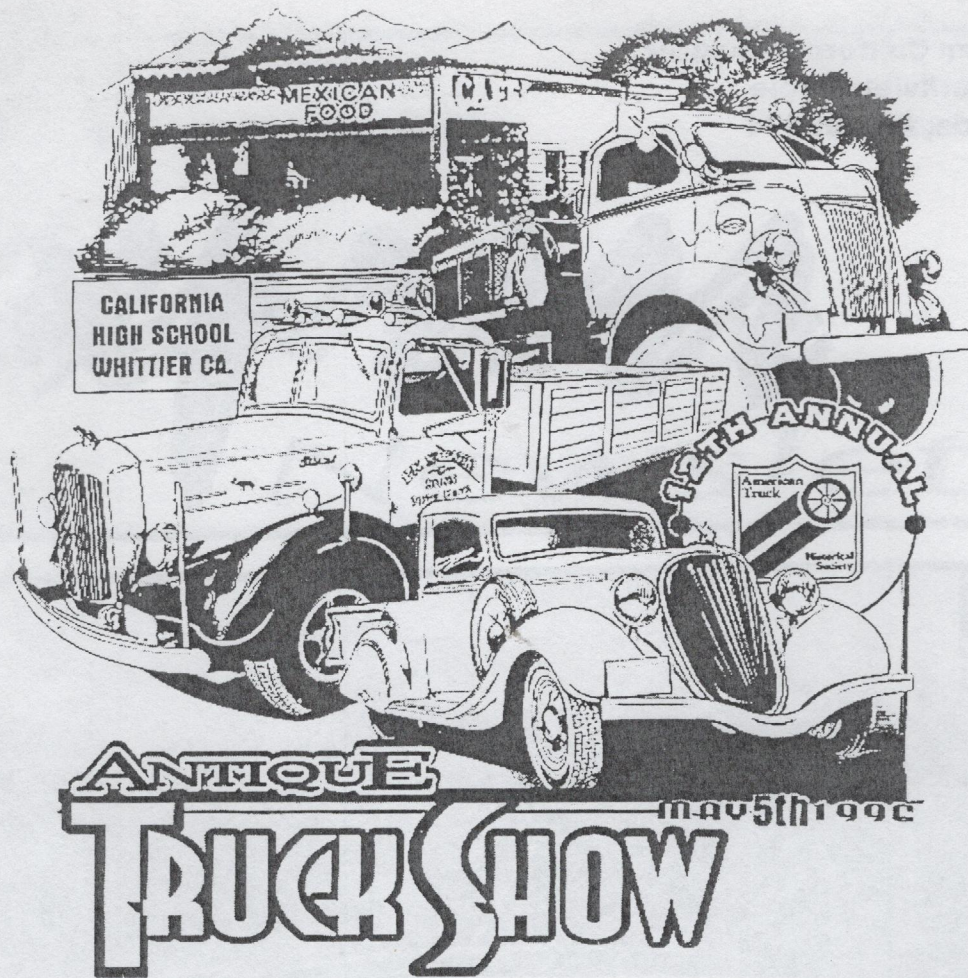
As a business, you may deduct all of your "ordinary and necessary" operating expenses, no matter how great or small your income. As a hobby, you may deduct your expenses, but only up to the amount of your income.

## Up - Coming Events 1996

1996

- February 11 Long Beach High Performance Parts Exchange, Long Beach Veterans Stadium, Long Beach, CA, 1(800) 762-9785
- February 17-18 San Diego Swap Meet, Jack Murphy Stadium, San Diego, CA.
- February 21 SCC-ATHS General Chapter Meeting, Bob Kennison's, 7:00 p.m., 173 N. Pine St., Orange, CA, (714) 997-5767. Calif. Thomas Bros. Map Page 196, D-1.
- February 24-25 Early Times Mid-Winter Rod Run, Hemet Ryan Airport, Hemet, CA, The Chapter participated last year. Contact Mark Christensen, (909) 883-1091.
- March 3 Long Beach High Performance Parts Exchange, Long Beach Veterans Stadium, Long Beach, CA, 1(800) 762-9785
- March 10 Pomona Antique Auto, Corvette...Swap Meet, Fairplex, Pomona, CA.
- March 16 SCC-ATHS Pre-Show Planning Meeting for the Annual Antique Truck Show, 9:00 a.m., Rocky Cola Cafe, 6757 Greenleaf Ave. with walk through at the school, Whittier, CA, Mark Christensen, (909) 883-1955.
- March 22-24 1/8 th Scale Vehicle Convention, Red Lion Inn, Vinyard & I-10, Ontario, CA, Vehicle Display on the 24th 10:00 a.m. - 5:00 p.m. Bill Goddard, (909) 247-7136.
- April 20 SCC-ATHS Final Show Planning Meeting for the Annual Antique Truck Show, Saturday 9:00 a.m., Leigh Knudson's Marine Machine Shop, 719 Ohms Wy. Costa Mesa, CA, (714) 645-3036. Calif. Thomas Bros. Map Page 199, A-3.
- April 27 CCC-ATHS, Kirkland Ranch Barbeque and Truck Show, Plymouth, CA.
- May 4 SCC-ATHS Setup for Truck Show, 3:00 p.m. Setup with Evening Barbecue, California High School, 9800 S. Mills Ave., Whittier, CA, Mark Christensen, (909) 883-1955.
- May 5 1996 SCC-ATHS Twelfth Annual Truck Show, California High School, 9800 S. Mills Ave., Whittier, CA, Mark Christensen, (909) 883-1955.
- May 23-26 1996 ATHS National Convention and Antique Truck Show, Sberaton Inn, Westgate, Toledo, OH.
- July 20 CCC-ATHS Central Coast Cooler, Arroyo Grande, CA, Central Coast Chapter, Bob King, (805) 473-0846
- August 3-4 Long Beach Model T Club 42nd Annual Car Collector's Parts Exchange, Veteran's Stadium, Long Beach, CA.
- August 24 SCC-ATHS 4th Annual Family Picnic, 11:00 a.m. to 4:00 p.m., Yorba Regional Park, Yorba Linda, CA, Teri McCann (310) 428-7054.
- September 18 SCC-ATHS General Chapter Meeting, Peter Dunkel's Place, 2475 W. La Pama, Anaheim, CA, Calif. Thomas Bros. Map page 194, A-1.





**Sunday MAY 5, 1996**

**California High School - 9800 S. Mills Ave., Whittier, CA**

\* Antique Trucks \* Fire Apparatus \* Military Vehicles \* Tractors and Gas Engines  
\* Swap Meet \* Vendors-Books-Toys-Accessories Food and Refreshments \* Raffle

**Admission: Show Vehicles - \$10 (\$8 before April 15)** Call for special promotional registration for tractors and gas engines.

**Spectators: Adults - \$3 Children - \$1 (under 12 free)**

For More Information Call: Mark Christensen (909)883-1955 or Ken Lund (909) 794-2616

Name \_\_\_\_\_ Phone \_\_\_\_\_  
 Vehicle(s) Make \_\_\_\_\_ Model \_\_\_\_\_ Year \_\_\_\_\_  
 Address \_\_\_\_\_ City \_\_\_\_\_ State \_\_\_\_\_ Zip \_\_\_\_\_  
 Registration Fee: \$10 per truck/vehicle (\$8 prior to April 15) Separate form required for each vehicle. Amount Enclosed \$ \_\_\_\_\_

Signature \_\_\_\_\_ Date \_\_\_\_\_

Mail registrations check to: Ken Lund, SCC-ATHS, 1732 Parkview Circle, Redlands, CA 92374 (Make check payable to Southern California Chapter A.T.H.S.)

RESERVATION: The Southern California Chapter of the American Truck Historical Society and California High School reserve the right to restrict participants to acceptable behavior during any and all activities for any reason participants or their vehicle, their appearance or conduct is deemed objectionable, the participant will be subject to removal. This reservation includes persons, things, conduct, printed matter, or any acts or items of poor character which are considered objectionable.

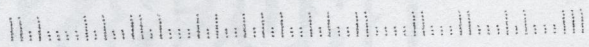
LIABILITY: In consideration of the acceptance of participation in SCC-ATHS Antique Truck Show and other activities, by execution of this entry form. I hereby release and discharge Southern California Chapter of the American Truck Historical Society, California High School, and City of Whittier its directors, officers, employees, agents, representatives, and servants and anyone else connected with management of conduct of and from any and all known and unknown damages, injured losses, judgements and/or claims from any causes whatsoever that may be suffered by any members to their person or property, further, each applicant expressly agrees to indemnify all the foregoing entities, firms, persons and bodies of and from any and all cooperating with applicants and under the direction or control of applicant.

ADVERTISING RELEASE: In consideration for the foregoing entry, vehicle owner and or guest agree to permit the use of their names and pictures, pictures of the vehicle for publicity, advertising and commercial purposes (including newspapers, magazines, radio and television) both before and after the events and do hereby sell or otherwise dispose of said photographs. All advertising rights reserved by the Southern California Chapter of the American Truck Historical Society.



**Southern California Chapter**  
**1732 Parkview Circle**  
**Redlands, CA 92374**

February 11  
 February 18  
 February 25  
 February 25  
 February 25  
 March 7  
 March 10  
 March 16  
 March 22  
 March 22  
 April 20  
 April 27



IF YOU HAVE ANY PROSPECTIVE MEMBERS OR A GROUP THAT YOU WOULD LIKE A NEWSLETTER SENT, PLEASE CONTACT THE EDITOR.



## 1996 Memberships are Due!!

If a \*95 appears on your Newsletter label, your 1996 membership fees are past due. Don't miss an issue of the Chapter's "Express Newsletter" or the National's "Wheels of Time." Please send your membership dues in now. Membership forms for the Chapter and National are enclosed in your Newsletter.

