

Newsletter Express

American Truck Historical Society
Volume Sixteen Number Four

Southern California Chapter
July / August 1996



1948 Autocar of Terry Klenske
"The Right Tool" by Ken Lund
President's Message - Mark Christensen
Secretary/Treasure Report - Ken Lund

PRESIDENT'S MESSAGE

American Truck
Historical Society

Southern California Chapter

1996 Officers and
Board Members

President

Mark Christensen (909) 883-1955

Vice President

Ron Berg (909) 880-1807

Secretary/Treasurer

Ken Lund (909) 794-2616

Historian

Bob Kennison (714) 997-5767

Editor

Dan Gosnell (909) 883-1091

Board Members

Tom Bell (310) 867-6711

Doug Graft (714) 639-5319

Leigh Knudson (714) 645-5938

Larry Laughlin (909) 794-5394

Herb Deeks (714) 774-7326

Rich Yost (909) 881-5526

The "EXPRESS NEWSLETTER" is published six times per year by the Southern California Chapter of the American Truck Historical Society.



Hello, gang! I'm sure we've all had a pretty full summer with all the different events that summer brings us. A few of us from the Southern California Chapter went to **Bob King's** on **July 19 through the 21st**. He really puts on a nice show. If any of you ever get a chance to go up there, he really makes you feel welcome. After arriving late Friday night, we awoke Saturday morning to a spectacular view of farmlands, sand dunes and the ocean. Bob had a lot of different activities planned, including a tour of the **El Diablo Nuclear Power Plant**, a tour of a collection of Woodies, gas pumps, and soda machines. Additionally, we wandered along **Pismo Beach**. When we got back to **Bob and Chris' home**, we looked through his old stuff, which included a substantial collection of trucking toys and memorabilia. By the time we kicked a few tires, it was time to feast on a barbecue dinner of tri-tip and chicken along with many tasty side dishes. After dinner, they put on a substantial raffle. The next morning we had a large breakfast of pancakes, bacon, sausage, and steaming coffee! Thanks **Bob and Chris** for such a wonderful time. This is definitely an event that you won't want to miss next year.

We've had a little change in venue for the picnic. We wanted to go somewhere cool so we picked the **Los Rios Rancho in Oak Glen**. It is a private park on top of a grass covered bluff shaded by live oak and sycamore trees. There is a petting zoo, old trucks and farm equipment, a bakery (where they make fresh apple pie), a store where you can buy apples and any kind of preserves your heart desires. We have reserved the park just for our club. So bring the family or significant other. Don't miss this one 'cause you will have a good time. The picnic is from **10:00 to 4:00 on August 24**. Cost of \$3 for adults and \$1 for children covers everything. Park entrance and all you can eat hamburgers or hotdogs with potatoe salad, chips, soda and the rest. Look for the directions elsewhere in the newsletter.

The next event that you should plan for is our annual trip to **Peter Dunkel's place on September 18**. At this meeting, we will be nominating and electing new Officers and Board of Directors. If you would like to nominate or be nominated to help run the club, this is the meeting to attend. Another item on the adjenda will be critiquing the Truck Show. We will also be planning out the clubs activities for the next year. If you have any event ideas, bring them to the meeting. Also, remember to be looking for some trophy toppers so you can win a free chapter membership for the year. Trophy topper contest winner will be picked at **Gunther's Meet**.

The weekend of **October 19**, the club is planning a camp out at **Vista at the California Early Day Gas Engine and Tractor Association's Museum**. A few of us went last year and we had a good time. They

ATHS - SCC

General Chapter Meeting

September 18, 1996

Peter Dunkel's Place,

Dunkel Brother's Machinery Moving

*2475 W. La Pama, Anaheim, CA,
Calif. Thomas Bros. Map page 194,*

A-1.

Contact SCC Pres. Mark Christensen
for agenda items.

IF ANYONE HAS ANY IDEAS SUGGESTIONS FOR NEXT YEAR'S TRUCK SHOW, bring them to the meeting at Peter Dunkel's or contact your nearest Board Member. □□□

DON'T PUT OFF GETTING THAT PICTURE OF YOUR TRUCK in that unique or historical place. For a long time you've told yourself, "I need to take the truck over there and take some pictures." Maybe its a scenic area like the Hollywood Hills sign, or a street lined with palm trees, or local park. Maybe it's an old factory loading dock, barn, train station, Fremont street in Vegas, or a Victorian type house. Whatever, most of us have wanted to get that unique picture of our truck. As each day goes by another building bites the dust or development levels an area. Don't be sorry. There are things out there that we can not control. Take the truck out some Sunday and get that memorable picture. All of a sudden the landmark or building is gone and you missed another Kodac moment. □□□

YOU NEVER KNOW WHO WILL SHOW UP AT THOSE MEETS. Last month while showing my truck at the Redlands Fire Muster, an older man walked up to me and introduced himself as Jack Osborne. The name didn't ring a bell. He told me that he had been the Tank Truck Forman (Captian) at the Forest Service Temescal Fire Station a long time ago. He said that he had picked my engine up at Arcadia (Forest Service Equipment Shop) when it was new in 1948. It was an honor to listen to him for the next hour or so. We walked around the engine about fifty times, crawled under it, opened every bin, and took pictures. He was excited about the engine being restored and back on the road.

I think the engine made his day and I know he had made mine. That day I made a new friend and learned a lot about my truck. You just never know who'll show up at a meet. Dan G. □□□

Welcome to New Members Donald Del Pino, Rosemead, CA; Michael Keller, Long Beach, CA, 1949 Chevy PU; John Robertson, Corona, CA, 1926-27 Autocar; John Healis, Whittier, CA, 1930 Ford A closed cab PU; Ernest Aragon, Arcadia, CA, 1946 Chevy COE. □□□

(Presidents Message continued)

have a lot of activities in the evening after everyone else goes home. If you bring your truck, you can camp free. Otherwise the cost is \$25. They have a parade you can put your truck in along with all the other tractors. Don't miss this one, it's a fun weekend.

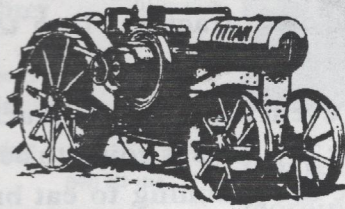
The next event is the annual **Truck Turnaround on October 26**. This is going to be an interesting event. We are planning to eat breakfast at an honest-to-goodness antique truck stop! We will meet at 8:00 a.m. It is located in Fontana on the corner of Etiwanda and Whittram. At 9:00, we'll go down Whittram about a block or so and take a tour of **Dalton Trucking**. Terry Klenske has an interesting tour of how his business operates. You might see anything from a motor getting put in at the mechanical shop to a trailer getting fixed in the fab shop. They repair trailers and do body work. Many interesting things go on here. From there, we'll get back on Whittram, turn right on Cherry and head to the I-10 Freeway and go east to **Yucaipa** where we are going to see a substantial tractor collection. Terry has some interesting pieces of equipment which he will operate for us. From there we will go another 10 miles or so to the **Klenske's** house. This setting is in an orange grove. Terry has a barn with a collection of trucks and tractors for us to see. There will be a lunch served of hamburgers and hot dogs. You will need to bring a side dish to serve about 15 people. This too is going to be a fun day.

The last event of the year will be at **George Gunther's Yard on December 1**. We always have a good time at Gunther's. I'm sure that everyone is looking forward to George and Betty's hospitality. This event allows us to enjoy all types of different vehicles. Bring your trophy topper for next year's Truck Show.

As you can see, we have many exciting events planned for the remainder of the year. Don't miss your favorite event. **Mark**

California Early Day Gas Engine &
Tractor Association's

31st Semi Annual Show



Threshing Bee, Antique Engine and Tractor Show

October 19 & 20, 26 & 27, 1996

Antique Gas & Steam Engine Museum

2040 N. Santa Fe Ave. Vista, CA

Time 9:00 am to 4:30 pm

For more information call the Museum at
(619) 941-1791 or (800) 5-TRACTOR.

December 1, 1996

ATHS SCC

Gunther's Yard Meet

2380 Curry St., Long Beach, CA,

Calif. Thomas Bros. Map, Page s, Reference E-1

For more information contact

George Gunther (310) 429-1597

National Sandblasting

Complete Paint & Rust Removal

Highest Quality Finish

Equipped for any size job

Plastic Media Blasting

Walnut Shell Blasting

Glass Bead Blasting

Aluminum Oxide Blasting

Shot Peening & Painting

(800) 878-1942

National Sandblasting
7101 South McKinley Ave.
Los Angeles, CA 90001

City Wide Truck and Equipment Co.

400 East Manchester Blvd.

Los Angeles, CA 90003

Final Close Out Sale!

The Price is Right!

Early Ford farm Tractor - \$1200

1940 Seagraves fire truck C-cab (ran good) \$2850

1951 Chev COE 2 ton cab/chassis with boom on back,
ran when parked 10yrs ago \$750

1957 F-600 Ford 4x4 has f/drive axle 312 eng, 5 sp NP
trans, 1000# winch in back, self erecting hyd front
boom, ran when parked 15 yrs ago. \$2500 or offer

1951 White 3000 w/oil tank, full air, 250 mustang eng.,
69000 miles ex LADWP good operating cond. when
parked \$3500 or offer

1940s-50s Wheels & tires

Lot of old Lights

1940s-60s Truck doors and fenders

3 speed B/L aux. trans

Old 5 speed Fuller & Clark

Truck Transmissions, steering and rear ends

The Price is Right!!

Contact Pete Levin, City Wide Truck and Equipment.

Southern California Chapter
American Truck Historical Society

4th Annual Family Picnic

August 24, 1996

10:00 a.m. to 4:00 p.m.

Los Rios Rancho
39610 Oak Glen Rd.
Oak Glen, CA
(909) 797-1005

Thos. Map: New-611 B7 (old 20C E3)

\$3.00 for adults and \$1.00 for children.

This covers everything!

(entrance to park and all you can eat)

Directions: From San Bernardino, East on I-10 about 20 miles
to the Cherry Valley off ramp. Go left (east) on Cherry Valley
Road to Beaumont Ave. Left (north) on Beaumont Ave.
(becomes Oak Glen Road in about 1 mile). Continue approx.
6 miles on Oak Glen Road to Los Rios Rancho. Follow our
orange ATHS signs and look for the big red barn on the left
and our SCATHS banners.

Call Mark Christensen (909) 883-1955
for more information.

1948 Autocar of Dalton Trucking Inc.

This **Autocar** was purchased new by **V.P. Hunt Trucking** of *Redlands, CA*. This truck had a **Cummins 200 hp** engine and was the envy of most other drivers. When it was fully loaded, it passed 165 hp and 180 hp cummins plus Detroit 6-71s and gas engines like **International K-B 12s** with regularity. The truck came with 7000 series (five main and three auxiliary) transmission, and an **Autocar GG** rear end. This combination could handle what was considered high power at that time.

In its original configuration, this tractor was a 3-axle tanker truck which pulled a 3-axle tanker trailer. In 1948 it hauled for **General Petroleum Company**, now **Mobil Oil Company**. In 1951 Hunt had an argument with General. He lost it when

General fired **V.P. Hunt Trucking**. It was then converted into a 2-axle tractor and used to pull covered dome cement hopper sets of doubles to various *Nevada* atomic sites. It was also used to pull 20 foot flatbed doubles with citrus in crates to the *Los Angeles* harbor for export.

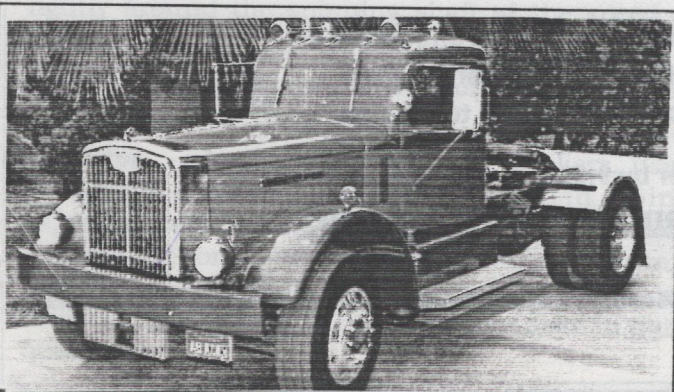
In 1958, Hunt went bankrupt. **Trailmobile Corporation** then repossessed the tractor that had been pledged for security. It was torn down for an engine overhaul at that time.

Hager Supply of *San Bernardino* purchased it at auction for \$1,700. **Bill Hager** figured he had about \$4,700 in it by the time it was road ready. For the next 20 years it was in continuous service by **Hager Supply** hauling chicken manure and sludge in side dump doubles from *Redlands/Calimesa* to *Coachella Valley*.

In 1978 it was purchased by **Dalton Trucking Inc.** for use at the now closed **Kaiser Steel** plant in *Fontana*. It was used for pulling a set of high side coke bottom

dump trailers. In this application, it worked round-the-clock for several months. Since then it has been used to shuttle trailers and tow forklifts to job sites. We restored this truck the first time in 1980 the engine, which still had the original D-D, pump was in framed in 1995. In 1980, the auxiliary transmission was rebuilt and the original GG rear end changed over to a R-170 Rockwell at 3.90 so it has good highway speed. Over the years the frame had been set up for different applications and as a result had many extra holes in it. Using a brass mallet we wire welded up approximately 50 useless holes before installing the new R-170 axle and suspension.

Today the truck is used mainly for **American Truck Historical Society (ATHS)** events.



Annual October 26, 1996

ATHS SCC Truck Turnaround

8:00 a.m. Corner of Etiwanda and
Whittram in Fontana

for breakfast at the Truck Stop

About 9:00 a.m. Tour of Dalton Trucking with Terry Klenske, after the tour (time?) Whittram to Cherry Ave. to I-10 Freeway, east to Yucaipa to view a tractor collection. Then on to Klenske Place near Crafton. for tour of Klenske's collection of trucks and tractors.

Hamburgers and hotdogs provided, bring side dish for about 15 people.

FOR SALE

Bob King (Central Coast Chapter, ATHS) Arroyo Grande, CA is looking to cut his vehicle inventory in half. Here is a list of vehicles that Bob would like to sell. Some may be already sold. All offers will be considered.

1940 KW Shovelnose, 150 eng., with turbo, runs, 3-axle with 22' bed and long dolly	\$10,550
1946 Westcoaster, has 200 eng., 3-axle long wheelbase, original uncut frame, runs.	\$3,500
1950 LJ Mack, 3-axle heavy camelback suspension 220 eng. runs.	\$2,500
1948 K7, 16' flatbed dump, 269 eng. runs, make a good hauler.	\$1500
1954 MacDonald, drop deck open sided van, eng not stuck. \$1000 spent on brakes	\$4500
R-190 IHC, 3-axle tractor, w/winch	\$1500
1938-40 D35, 3-axle tag, was on propane.	\$950
1935 Ford, 1½ ton, body looks good, glass out	\$650
1941 Chev Fabco, 3-axle vegetable farm truck, rusty cab	\$975
1946 K10, 2-axle tractor, eng stuck	\$750
1946 K11, 2-axle tractor, runs, nice cab and fenders	\$1000
1946 K8, 2 axle tractor, on propane, parts truck	\$550
Diamond "T", 1-920, 1-830, 2-720s (would make one) 1-160, could make 3 or 4 out of all of these	\$3000
1950 Fruehauf, 32' furniture trailer, pretty nice	\$1750
1955? Fruehauf, 35' Furniture trailer, storage, needs roof repair.	\$750
30' Cattle trailer, heavy tandem suspension, (has Maxis, worth \$750)	\$1000
1973? COE IHC, 2-axle tractor has Detroit eng., 13 speeds, no non-op, \$1100 spent on trans.	\$2500
1973 COE IHC, 2-axle tractor, 350 w/Jakes, runs good, looks good was local ranch truck	\$5500
2 1960 Pete's, 1 nice, 1 fare, both engines run long wheelbase, 3-axes	pair \$3500
1928 White, eng., free starter needs tinkering with, have good wood cab for this truck and it has new tires,	\$5500
1932 AB Mack, partly dismantled, have new cab for this one also.	\$5000
18' Service bed, all hydraulic operated 4 tanks diamond plate deck	\$1750
Jo-Dog	\$600
30' 2-axle, flatbed trailer, 10 hole budds,	\$850
26' 2-axle, flatbed trailer, 6 hole budds,	\$750

The Deer Park Winery and Auto Museum

will hold its

1st Annual Truck Show, October 6, 1996.

Staged on the grass of a 20 plus acre property, amid citrus and giant oak trees.

Deer Park also offers specially catered barbecues and a host of optional food packages, refreshments and entertainment.
Over 100 rare and unusual trucks from ½ tons to big rigs.

Exhibitors register by 9:30 a.m.

Entry fee \$25, ATHS member trucks are free.

Deer Park is located on State Hwy. 163 seven miles north of Escondido, approximately thirty miles south of Temecula.

The Right Tool

by Ken Lund

I was inspired by an article (same topic) in the April 1996 issue of Road & Track. I thought this might be a good follow-up to Dan's, "You Might Be An Antique Trucker If...". This is for those of you who have used a butter knife for a screwdriver, or even a screwdriver as a butter knife. There is a partial list of misused or misnamed devices we are all familiar with. I'm sure some of you can add to the list.

Hammer - Next to the stick, probably one of the first tools derived from a weapon. Now used to locate and break expensive, rare, fragile or brittle pot metal or aluminum parts next to the one you are trying to tap loose.

Utility Knife - Used to slice through boxes and the contents. Works particularly well on cartons containing the custom made seat covers or canvas top you have been waiting six months for and now have a "duct tape" patch on.

Hacksaw - One of a family of cutting tools used to transfer horizontal force into crooked and unpredictable motion.

Electric Drill - A power tool used to sever tail light wires, or brake lines under the floorboard. Also used to spin (not remove) pop rivets, and add an interesting "design" next to the hole you were trying to drill on that freshly painted part.

Drill Press - A stationary, more powerful version of the electric drill. Used to snatch flat metal bar stock out of your hand, and throw it into (and denting) one of your prized vehicles, and spilling your beer all at the speed of light.

Wire Wheel - Electric powered device used to clean rust off of old bolts and throw them across the shop at the speed of light (similar to drill press). Also used for removing fingerprint "whorls" and callouses.

Buffing Wheel - Similar to wire wheel, used for taking delicate trim pieces, start to polish, and wind tightly around the spinning shaft at the speed of light.

Pliers - Used to round off the corners of bolt and nut heads. Tool used to turn

Vice Grips - A more expensive pair of pliers, used to round off bolt heads. Useful in doing experiments in "conductivity," transferring heat from the welding torch, through the metal, and to your hand. Also used to create blood blisters and bruises when using the release mechanism in tight quarters.

Pneumatic Wrench - High speed, more powerful version of pliers and vice grips.

Air Compressor - A device that uses electricity (created by runing the air, rivers, landscape as far as the environmental wacko are concerned) to run a motor, compress air into a storage tank, blow up beach balls or bicycle tires. Sometimes used to power pneumatic wrench (see pliers and vice grips).

Craftsman 1/2" x 16" Screwdriver - Not a chisel or pry bar, used as a chisel or pry bar.

Phillips Screwdriver - A metal shaft with a "cross-point," attached to a handle, used for punching holes in old cardboard oil can lids, center punch holes, and rounding off slotted heads of Phillips head screws. Also used to align misaligned bolt holes.

Chisel - A metal shaft with a sharp carefully machined edge, attached to a handle and used as a screwdriver or pry bar. When used as a chisel, manages to move just slightly when striking with a hammer to concentrate the force to your hand.

Clutch-head or Torx Driver - A specialized tool similar to a screwdriver, designed by some deranged General Motors engineer (who never works on a vehicle). Fits bolts with special heads, that when trying to use a screwdriver to remove, screws them up so badly that you need to use another tool (see pliers, vice grips, E-Z out and oxyacetylene torch)

Oxyacetylene Torch - A device used for scorching paint, starting grease fires, burning off bolts with rounded heads, and sometimes to fuse metal parts together.

E-Z Out" Bolt Extractor - Essentially a reverse thread, tapered drill bit, made of metal "ten times harder than steel," that snaps off in the hole of the sheared off bolt you're trying to remove (probably with head rounded off prior to shearing).

Incandescent "Trouble Light" - Good source of Vitamin D (the sunlight vitamin), used for tanning (and burning) arms and hands in tight places. Also used for testing the shock resistance of electric light bulbs. Name is somewhat misleading, usually mor "dark" than "light".

Battery Powered Flashlight - Storage container for burned-out, leaking, corroded "D" cell batteries.

Battery Electrolyte Tester - Device used to transfer acid from a vehicle battery to your clothes or tool box, after determining that your battery is in fact dead, just as you thought.

Shop Rag - Cloth like material, composed almost entirely of pink lint. Used to wipe grease and stop bleeding. When laundered in the washing machine, adds a fresh scent and greasy stains, to the families white laundry which is now "pink."

Shop Manual - Theoretically a book with detailed instructions on how to fix, replace, or reassemble the part that you knew how to fix, replace, or reassemble without reading it. Also used to preserve your fingerprints in grease, directly over instruction marked "IMPORTANT," for subsequent use. Also used as a source for FBI to obtain fingerprints of deranged mechanics.

Metric Wrenches and Sockets - Tools with measurements somehow based upon the earth's circumference, distance to the sun, the mystery of the pyramid, or something other than the fraction of the length of a dead king's foot. Similar in size, but not an exact fit to standard "English" nuts and bolts. Used like pliers and vice grips to round off bolt heads.

Sparkplug Socket - Device used with a ratchet wrench, to break off the ceramic insulator of a new sparkplug that you hand tightened in the most inaccessible, knuckle-scraping, part of the cylinder head. Also used to fine the exact center of the vehicle you are working on, or roll at the speed of light down the driveway and into the gutter, when it slips off the ratchet.

Ratchet Wrench - A handle with a carefully machined gear mechanism, designed to hold sockets. Used as a hammer or pry bar.

Pry bar - A steel shaft with a curved and or tapered end. Adds weight to tool box. Use unknown. Invented to take the place of all other tools which work very well.

Douglas Fir 2x4 - Used as pry bar, but usually snaps off just before you almost get the part where you wanted it.

Tweezers - Small tool used for removing splinters caused by Douglas Fir 2x4. Also used to remove minute pieces of metal slivers from your hand. You have no idea where it came from. Usually used in conjunction with granny glasses or magnifying glass.

Welder - Used to fuse broken pieces of metal back together, only to find that it breaks next to your weld the next time. Source of facial sunburn without going to the beach. Tool use to blow out an even larger hole when trying to weld up a small hole. Also starts small fires in shop trash cans.

Well, that's all I could think of for now, but I'm sure you have more uses for all of those "specialized" tools.

Ken Lund

July 1996 Secretary/Treasurer's Report

Bank Balance as of 7/29/96 \$4,807.20

There have been no meetings since the one held May 22 at California High School, when we presented a check for \$1,500 to the PTA.

There is no new business. A brief meeting will be held at the picnic August 24. Some last minute changes were necessary, so the picnic will be held in Oak Glen (see information and map in another section).

The next formal meeting will be our annual planning meeting at **Dunkel Brothers Machinery Moving** in Anaheim. Besides being held at the **Dunkel's "Museum"**, this is a special meeting where we plan the events for 1997. If you have any ideas of places to see, or things to do, or just ideas for the club, this is one of the most important meetings of the year.

Plans for the **May 4, 1997 Truck Show in Whittier** are already under way. While one would think that after twelve successful years the show "practically puts on itself", you couldn't be more wrong! It is a year round project for all of us, and we always need help. I am already submitting ad copy to national magazines (some need six to nine months lead time). If you know of any magazines or other sources you think we should seek for advertising, please let me know. **Elizabeth Wantland** is coordinating with the school and PTA and this year's show will be even better than before!

It's the midst of "show" season, so if you want a supply of flyers and "windshield cards" to help promote the **May 4, 1997, Truck Show** when you're at an event or around town, please let me know, and I'll mail them to you ASAP. We also have two small mailable (2'x4') banners we can loan out, if anyone needs them.

Each month I receive a list of new members from "National", and I send them information about the chapter. This mailing has 35 names of potential members. We have added 5 new members, some at the **Model Ts Long Beach Swapmeet** (with Mark's, Stretch's and Ken's trucks on display). Total paid 1996 members (including a few complimentary copies to other chapters, etc.) is 144. We still have nearly 50 unpaid members from '95 (and not getting this issue of the newsletter), but I will be contacting them directly. If we can ever reach a consistent 200+ membership, we can get a bulk rate postage rate. So get out there and recruit new members!

That's about all for now. Hope to see you at our next events. We have a lot of things planned over the next few months, so check the Calendar Section.

Respectfully submitted.

Kenneth W. Lund II, Secretary/Treasurer

Up - Coming Events 1996

1996

- August 18 Riverside/Corona Chapter, Model "T" Ford Club of America Car Swap Meet, *Riverside Sports Complex, Riverside, CA, For info contact (909) 780-2316.*
- August 24 SCC-ATHS 4th Annual Family Picnic, 10:00 a.m. to 4:00 p.m., *Los Rios Rancho, Oak Glen Rd., Oak Glen, CA, For more info call Mark Christensen (909) 883-1955.*
- August 25 Pomona Antique Auto, Corvette, Porsche, Street Rod, & Volkswaagen Swap Meet, *L.A. County Fairgrounds, Pomona, CA (714)544-7004.*
- September 8 Long Beach Rod & Performance Swap Meet, *Veteran's Stadium, Long Beach CA (800) 762-9785.*
- September 18 SCC-ATHS General Chapter Meeting, *Dunkel Bros. Machinery Moving, 2475 W. La Pama, Anaheim, CA, Calif. Thomas Bros. Map page 194, A-1.*
- September 19-22 San Bernardino Route 66 Rendezvous, 7th Annual, *San Bernardino Convention and Visitors Bureau, San Bernardino, CA, For info call (909) 889-3980 or (800) TO-RTE-66.*
- October 6 1st Annual Truck Show, Deer Park Winery and Auto Museum, *Deer Park, 7 mile north of Escondido on t Hwy 163, (619) 749-1666.*
- October 13 Long Beach Rod & Performance Swap Meet, *Veteran's Stadium, Long Beach CA, (800) 762-9785.*
- October 13 Pomona Antique Auto, Corvette, Porsche, Street Rod, & Volkswaagen Swap Meet, *L.A. County Fairgrounds, Pomona, CA (714)544-7004.*
- October 16-20 "Run to the Sun", Relics & Rods 19th Annual Event, *Lake Havasu City (520) 855-0933*
- October 19 Vista Threshing Bee, Antique Engine and Tractor Show, *Antique Gas & Steam Engine Museum, 2040 N. Santa Fe Ave. Vista, CA, (619) 941-1791.*
- October 26 SCC-ATHS Truck Turnaround, Dalton Trucking Tour, 8:00 a.m. *Fontana conrner of Etiwanda & Whittram. Tour from Fontana to Yucaipa. For info call Mark Christensen (909) 883-1955.*
- November 10 Long Beach Rod & Performance Swap Meet, *Veteran's Stadium, Long Beach CA, (800) 762-9785.*
- November 17 Pomona Antique Auto, Corvette, Porsche, Street Rod, & Volkswaagen Swap Meet, *L.A. County Fairgrounds, Pomona, CA (714)544-7004.*
- December 1 Gunther's Yard Meet, ATHS SCC, *2380 Curry St., Long Beach, CA, Calif. Thomas Bros. Map, Page S, Reference E-1, For more information contact George Gunther (310) 429-1597.*
- December 7 Fire Dept. Antiques and Memorabilia Flea Market, *Pioneer Fire Company Museum, 247 S. Boyd, San Bernardino, CA, Allen Bone (909) 792-3827 or Steve Shaw (909) 864-6179.*
- December 8 Long Beach Rod & Performance Swap Meet, *Veteran's Stadium, Long Beach CA, (800) 762-9785.*
- 1997
- Feburary 15 SPAAMFAA National '97 Winter Meeting and Muster, *Hosted by Crown FireCoach Enthusiasts, Downtown San Bernardino, CA, Info contact Ron Leatz (619) 243-4536.*
- May 4 Annual Truck Show, Southern California Chapter, ATHS, *California High School, Whittier, CA, For info call Mark Christensen (909) 883-1955 or Ken Lund (909) 794-2616.*
- May 22-25 American Truck Historical Society National Convention, *Embassy Suites Hotel, Greens Boro, NC (205)870-0566.*

Send information about important events to: Dan Gosnell, Editor, SCC - ATHS,
5505 N. Mayfield Ave., San Bernardino, CA 92407 (909) 883-1091

*Palmdale
Truck
Truck Show For Kids
5/6*



Southern California Chapter
Calendar
 of
 American Truck Historical Society



**Southern California Chapter
1732 Parkview Circle
Redlands, CA 92374**



IF YOU HAVE ANY PROSPECTIVE MEMBERS OR A GROUP THAT YOU WOULD LIKE A NEWSLETTER SENT, PLEASE CONTACT THE EDITOR.

Southern California Chapter - American Truck Historical Society

4th Annual Family Picnic

August 24, 1996

10:00 a.m. to 4:00 p.m.

Los Rios Rancho Park, 39610 Oak Glen Road, Oak Glen, CA, (909) 797-1005

\$3 for adults and \$1 for children. This covers everything, entrance to the park, and all you can eat.

*East on I-10 to the Cherry Valley Rd. off ramp, go east on Cherry Valley to
Beaumont Ave. Turn left (north) on Beaumont Ave. Beaumont will turn into Oak
Glen Rd. Los Rios Rancho is approx. six miles from the Cherry Valley Rd. and
Beaumont intersection.*

39610 Oak Glen Rd. Look for bright orange ATHS truck signs and the banner.

Calif Thomas Bros. Map, Page 99, Ref. E-2

For more info call Mark Christensen (909) 883-1955.