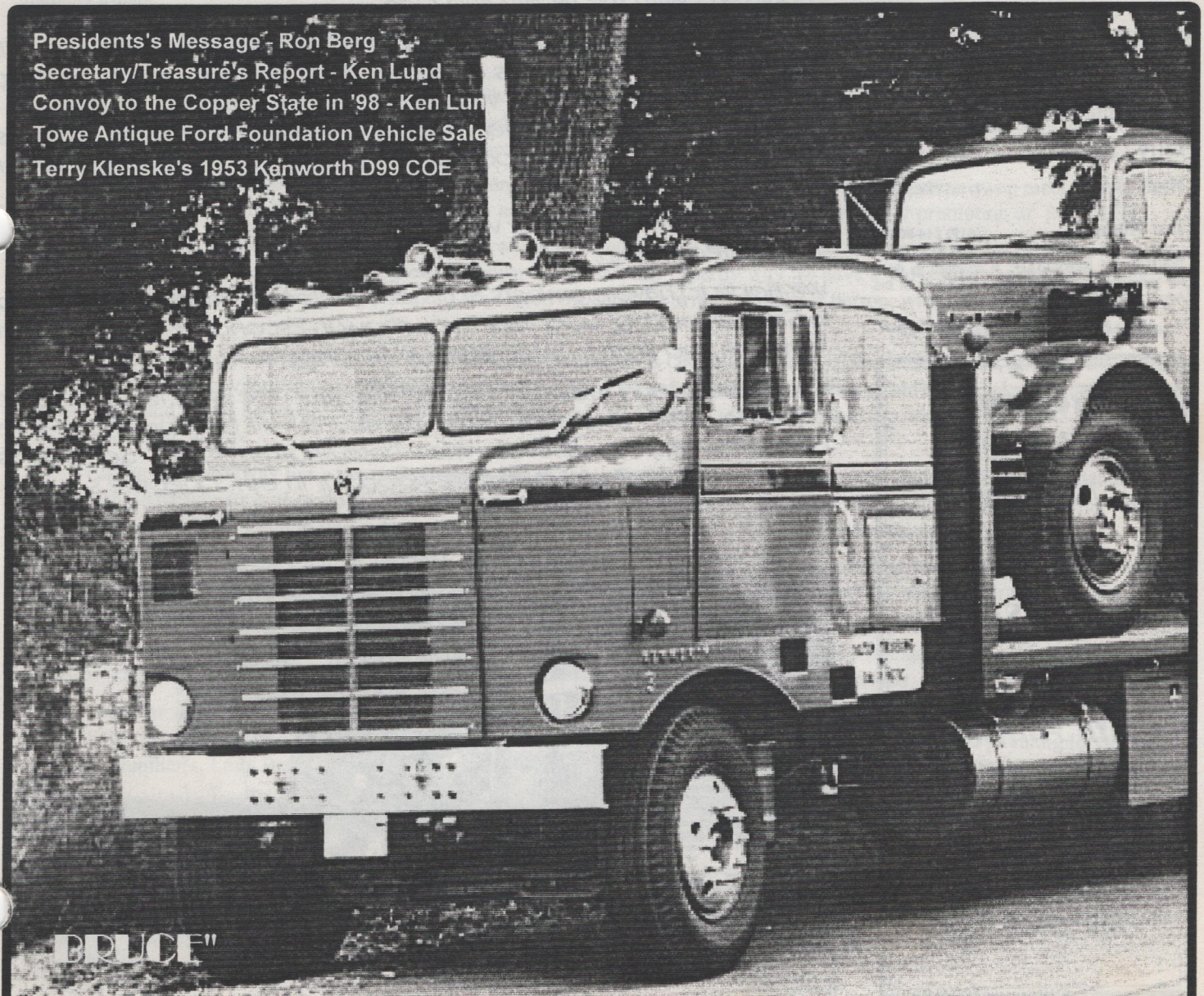


AMERICAN TRUCK HISTORICAL SOCIETY
VOLUME SEVENTEEN NUMBER FOUR

SOUTHERN CALIFORNIA CHAPTER
JULY/AUGUST 1997

Express newsletter

Presidents's Message - Ron Berg
Secretary/Treasurer's Report - Ken Lund
Convoy to the Copper State in '98 - Ken Lund
Towe Antique Ford Foundation Vehicle Sale
Terry Klenske's 1953 Kenworth D99 COE



BRUCE"



American Truck
Historical Society

**Southern California
Chapter**

1997 Officers and
Board Members

President

Ron Berg (909) 880-1807

Vice President

Steve Sackett (909) 247-6716

Secretary/Treasurer

Ken Lund (909) 794-2616

Historian

Bob Kennison (714) 997-5767

Editor

Dan Gosnell (909) 883-1091

Board Members

Mark Christensen (909) 883-1955

Doug Graft (714) 639-5319

Leigh Knudson (714) 645-5938

Larry Laughlin (909) 794-5394

Herb Deeks (714) 774-7326

Jim Wade (619) 244-8059

The "EXPRESS NEWSLETTER" is published six times per year by the Southern California Chapter of the American Truck Historical Society.



**General
Chapter
Meeting**

will be held

August 16

at the

**5th Annual
SCC - ATHS
Picnic.**

**Los Rios Rancho
Oak Glen, CA.**

President's Message



Hi everyone. Wow, the next few months are going to be very busy! I hope you can make it to our annual picnic on August 16th. It is a wonderful time for the whole family. We will have the whole place to ourselves. It is typically a lot cooler there. Food is great and the pies are out of this world, Make an effort to come to Los Rios Ranch and join us. Our turnaround is going to be in October at Bobby Babcock's place in Fallbrook. I have never been there, and I am very excited about seeing his place. We are working on the route and convoy possibilities. There will be a barbecue and train ride, It will be in the morning and that leaves the possibility of going to the Vista tractor show in the afternoon for those so inclined,

The California Speedway has contacted us with the possibility of displaying our trucks at the Craftsman Truck Race on Saturday, October 18th. We may even be asked to do a parade lap on the track before the race. I went to the Nascar Winston 500 and was very impressed with the facility and race.

Our next meeting is at Peter Dunkel's on September 17th. We will be planning our next years calendar. This is an important meeting, please try to make it. This will be our last time meeting at this location. Peter is buying a larger place and will be moving his business after our meeting. The good news is that he will be making a larger museum at his new place.

Anyone who knows Peter will be looking forwards to his new place with baited breath,

We hope to have members at other events I like Route 66 weekend in San Bernardino, Deer Park Truck show in Escondito, Truck Drags in Palmdale and Fortier Truck show in Fresno.

Check the oil and radiator) fill'er up and grab the wax, lets see some of those trucks at any of these events. It will be fun and it sure beats moving your relative or friend into another house. Sometimes it seems that is all old trucks are good for in other people's eyes. Stretch.

Terry Klenske's 1953 Kenworth D99 COE. (See article)



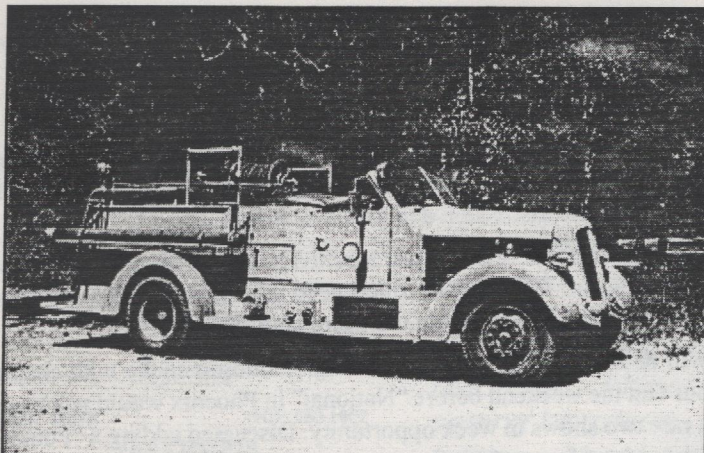
Minutes of July 16th Meeting

Bank Balance as of 08/01/97 \$3463.55

The meeting was called to order at 7:45 PM at the home of Ron (Stretch) Berg in San Bernardino. In attendance were Mark Christensen, Herb Deeks, Leigh Knudson, Larry Laughlin, Ken Lund, Steve Sackett, and Jim Wade. Also in attendance was Jim Hummel, one of our new members. The following topics were discussed, with the discussion and action as noted.

- **Critique truck show.** We felt that generally all went well. Any minor problems were just handled by the worker as needed. We did have a problem with a rather hostile vendor who we hope never to see again. The portable toilets need to be brought up to the entry gate so they don't get tipped over the night after the show. As usual, every work station could use more help.
- **Set date for our Whittier truck show 1998.** Our show will be **Sunday May 17, 1997**. Leigh Knudson spoke with chapter representatives from most of the Western States, and it was unanimous that the weekend before "National" in Phoenix would work well for them. Whether by antique truck, or car, this gives many people a rare two shows in week opportunity. Discussed adding a "Pomona Haulers" (unique toy wagons) for the show and have some wagon related item for trophy.
- **Caravan to National Convention Phoenix 1998.** Along with our truck show we are planning a caravan to Phoenix. Tentatively, for out of area visitors, we would arrange a special group rate to the Peterson Auto Museum in Los Angeles on Monday May 18th, then plan on meeting at Dalton Trucking in Fontana, with a tentative departure to Phoenix Tuesday May 19th, a possible overnight in Blythe, and planned arrival in Phoenix about noon. We will try to encourage people from all of western US and Canada to go to Phoenix via So. Cal.
- **Transporters** We need to start a list of those needing to have their trucks transported, and those willing to transport other members trucks.
- **Discuss raising Truck Show entry fee** Discussion was tabled until September General Meeting to raise entry fee (\$15.00 for non members and \$10.00 for members)
- **Select trucks for T-shirt and advertising** This is needed so Auto-Graphix (Jerry Turner) can start on the artwork. Decided on Josh Klenske's 1953 Peterbilt (best of show), Aden Burley's 1923 Mack, (Best Pre 1927 Stock), and Mile Palmer's 1954 Divco (Best '54-'61 over 1 ton). We will have art done as soon as possible.
- **Long Beach Stadium Swap Meet.** George Gunther can get us 3 spaces for the Long Beach Stadium swap meet July 26 & 27. Does not look like many will attend. We will try to get some banners to George Gunther, however, for promotion of SCC-ATHS
- **August 16th picnic.** Discussed pros and cons of the location and the reservation fee. All agreed the location is a refreshing change (usually much cooler), the pies are great, and even at a "loss", this is partly why we have a show so we have "fun money" for outings. After all, we are a nonprofit organization. We agreed the entry fee will be \$5.00 per person, with a maximum of \$15.00 for a family of 3 or more.
- **Turnaround to Fallbrook.** He says the date Sunday October 26 is OK. We just need to decide what to do, and how to get there. As it gets closer, a group will plan the route and what to do. Once there we can look at his collection of old cars, trucks, wagons, etc., ride his steam train, and have a barbecue. This is the same weekend as Vista Threshing Bee, and some may want to go to Vista Saturday and go to Babcock's on Sunday.
- **California Speedway has a Sears Craftsman Sport Truck Series October 18.** Another organization may be contacting us to see if we want to participate in *their* truck show. We may also be able to be volunteers and get admission in exchange for being a worker ("ambassador", etc.). Ken Lund to find out more. At the very least, we should consider going to the race as a group.
- **Discussed raising the Chapter dues** The dues have been \$10.00 for 15+ years, and printing and postage have gone up, etc. Voted to continue at \$10.00 if renewed before March 1st, and to increase to \$12.00 after, to encourage early renewal.
- **Status on "generic" club T-shirts and hats.** Steve Sackett's son is a graphic artist and will probably be doing the artwork for the shirts. We suggested an antique "orange crate" art design would be appropriate, and include a Moreland truck, as well. He will try to get a commitment. We should try to have them in time for truck show in May and National Convention.
- **Consider setting definite dates and locations for quarterly meetings.** Suggested: March - general and final "pre-show" meeting; June - general and "post-show" critique meeting; September - Dunkels, Anaheim - general meeting and planning for next year; December - Gunther's, Long Beach - general meeting, trophy tops, etc. This will be discussed in more detail at Dunkel's in September.
- **Discuss ideas locations for a possible January outing.** Prior years have been Peterson Museum, Hathaway Ranch, etc. A "high desert" run was discussed including Route 66 run Roy Rogers museum. More ideas needed. This will be discussed in more detail at Dunkel's in September.

The meeting was adjourned at 9:00. There will be a short meeting at the picnic Saturday August 16th. The next quarterly meeting will be 7:30 PM at Dunkel Brother's Machinery Moving office, 2475 W. La Palma, Anaheim (714)828-6683. Plan to arrive early and view the Dunkel's *fantastic* collection of vintage trucks, motorcycles, Porsches, Chris Craft boat, etc. Don't miss this one!



For Sale: 1948 Seagrave fire truck, 12 Cyl. with pump. Ex South Gate Engine #3. \$2000 OBO. Earl Fink, 7 Oaks Mountain Resort, 39950 Seven Oaks Rd. Angelus Oaks, CA (NE of Redlands) (909) 794-2917 or 794-5320.

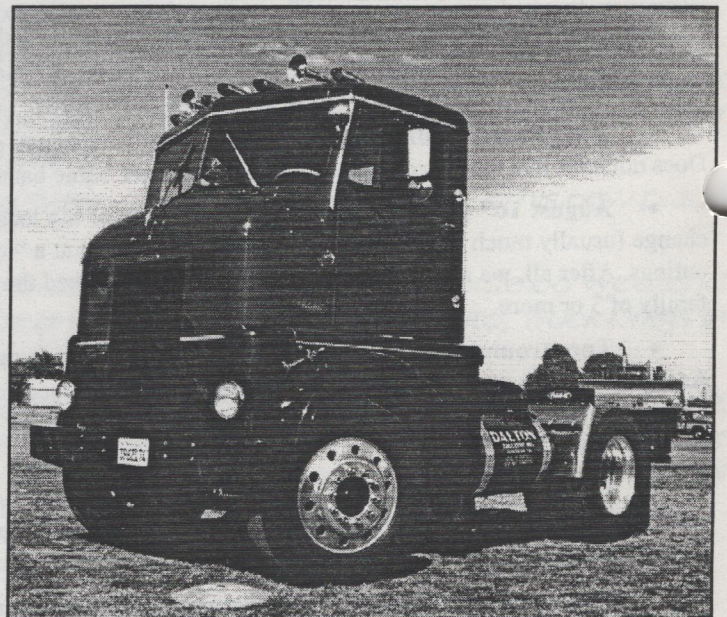
For Sale: Two good original 32 x 8.8 Goodyear tires and 16" early Ford wheels and tires. Call **Marvin Meyer (909) 798-1898.**

Los Rios Rancho 39610 Oak Glen Road, Oak Glen CA August 16, 1997, will be the site and time of our next general meeting and **Annual Picnic.** Nestled in the wooded foot hills east of San Bernardino, the rancho apple orchard provides a beautiful setting for a picnic. Don't miss it. Bring your old truck! East on I-10, E on Cherry Valley, North on Oak Glen. Contact Ron Berg (909) 880-1807 or Ken Lund (909) 794-2616.

Los Rios Rancho will also host a **Annual Charity Car Show** sponsored by Desert Pass Pick Ups Ltd. on **September 6, 1997 10:00 am to 4:00 pm.** For more information contact **Lyle & Diane Loomis (909) 763-4545 or Pat Ford (909) 849-9348.**

For Sale!! 1947 International KB 5 1½ Ton truck (Stock). Frame Length set up for 12 foot body (no body included.) Four Speed forward - 2 speed rear end highway runner. Six cyl. flat head motor ran when we got it (had knock). Torn down for rebuilding. New parts included. 8.25 x 20 tires (front tires almost new). New old stock radiator. Straight Cab, with reupholstered seats. New front glass for cab, new rubber for windshield and cowl vent. New wiper arms and blades. Perfect grill, sandblasted, repaired and primed. Stainless grill trim included with new trim clips 80+. New brake rebuild kits included. New miscellaneous trim items and rubber. Shop Manual included. Extra parts included; spare transmission, block, doors, fenders, axles, Miscellaneous more parts. Lots of spares. Lots of work already done, all tore down. Everything is here to make a real nice truck. There is much more than mentioned. Will take \$1800 or best offer. Come and take look. Great truck for a business. **Herb Deeks, 1516 E. Santa Ana St. Anaheim, CA 92805, (714) 774-7326.**

For Sale!! 1-Chevy ½T cab and chassis, original, needs restoration. 1-Chevy 1½ T cab & chassis, original, needs restoration. (Orange Co.) **Dave (714) 649-2697 or pager (714) 691-4659.**

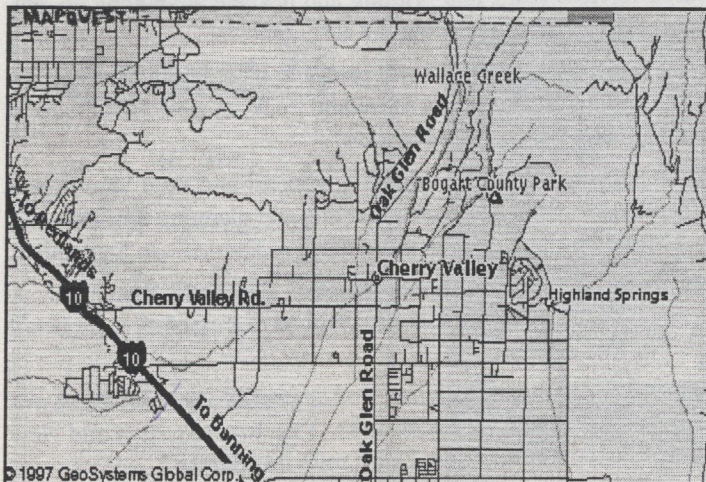


Josh Klenske's 1953 Peterbilt (best of show 1997) one of three trucks chosen to be on the 1998 Truck Show T-shirt.

For Sale: 1937 Ford 1½ Ton Dump truck. Losing the storage space, must go. If no is interest it may end up in a junk yard. **Tom, (818) 506-1585.**

Software Demos: Mr. Gasket Performance Group has a web site. www.mrgasket.com They offer two free demos of their software program "Desktop Dyno" and "Desktop Drag." You can download their demos (approx. 2 min. each) through the "Filling Station." A list is also available of where the software can be purchased. Various performance catalogs can be downloaded (approx. 20-25 min.) or the site has an address to send to. The catalogs can be read in "Adobe Acrobat"

Speaking of web sites the **CHP** web site www.chp.ca.gov provides *highway emergency and weather advisory bulletins.* Just click on "Traffic Incidents."



Map to 5th Annual Picnic, Los Rios Rancho. August 16, 1997



Aden Burley's 1923 Mack, (Best Pre-1927 Stock) one of three trucks chosen to be on the 1998 Truck Show T-shirt.

Cal Trans also provides access to free information, on-line maps, major city maps, distance computing, highway conditions. www.dot.ca.gov.

AAA's web site provides information for both members and nonmembers. www.aaa-calif.com Travel services, rates, etc.

Two other sites which are dynamic for all types of traveling.

City Net www.city.net/countries/united_states provides various information. zoomable maps, find locations, trip planner, weather, lodging, lots more. The other site is

Map Quest www.mapquest.com Map Quest provides trip quest, interactive atlas, personalized maps, fine a place, driving direction. For us slow trucks "Driving Directions" will allow you to click off "avoid preferences." Just check off major highways, minor highways, and thruways. This leaves you a planned trip of local and frontage roads.

Delorme Soft Ware provides a CD-ROM called "Map-N-Go" 3.0 version, \$39 at most computer stores. This is a very useful mapping and travel soft ware. It can give you written directions with a route map. Your directions can include additional stops. It can find an address, business, office, etc. Options include travel speed, type of roads, travel preferences, map editing, historic, direct, or scenic routes. Lots more.

For Sale 1947 Ford COE original, runs good, new tires, new brakes, straight body (no bed), needs grill. -- \$2500.

1968 Ford Rancho Rebuilt 289 V8 automatic, A/C clean, - \$2250.

Transmission 1937 Ford HD 4-speed. Call for price.

Tires & Wheels (2) 700 x 16 for 1937 Ford. Call for price.

Engine Flathead V8 for 1946 Ford.

Miscellaneous Parts for 1937 Ford Pickup. Grill, Dash panel and instruments. Call for price. **Tom Riela**, 6036 Craner St. North Hollywood, CA 91606 Phone: (818) 506-1585

Trucks for next years truck show T-shirt and advertising were selected at the last general meeting. This is needed

so **Auto-Graphix (Jerry Turner)** can start on the artwork. Decided on were **Josh Klenske's 1953 Peterbilt** (best of show), **Aden Burley's 1923 Mack**, (Best Pre 1927 Stock), and **Mile Palmer's 1954 Divco** (Best '54-'61 over 1 ton). We will have art done as soon as possible.

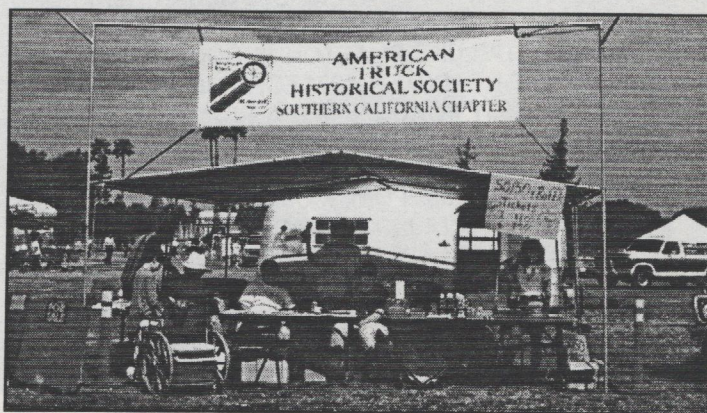
Thanks to the volunteers at the Truck Show.

Additional thanks goes to the following people for helping out at this years truck show. **Diane Christensen, Bob Harrington and Lavern Harrington.**



1997 NASCAR CRAFTSMAN SERIES PACE TRUCK, 1997 Chevy C/K pickup truck. Powered by a 350 ci 291 hp V8.

Ken Lund has been in contact with marketing people **C3 Network at the California Speedway**. The last letter Ken received they invited the club to participate in a **truck show** which will be in conjunction with the **October 17, 18, & 19, 1997 NASCAR Sears Craftsman Series Truck Race**. They mention a possible parade lap prior to the race. They will have some final information after Aug. 7. We will get the info out to you asap. **For now mark your calendar for October 17, 18, 19, 1997 for the California Speedway, Fontana, CA.**



SCC Club booth at the '97 Truck Show.

**Collection Car Auction
TOWE ANTIQUE FORD FOUNDATION
VEHICLES TO BE SOLD
240 Vehicles "No Reserve"**

**All will sell regardless of price, to the highest bidder.
Auction conducted by Kruse International.**

**Saturday, September 13, 1997 Towe Ford Museum, 2200
Front Street, Sacramento, CA 95818 (916) 442-6802 FAX
(916) 442-2646.**

**Saturday, September 20, 1997 Towe Ford Museum 1106
Main Street, Deer Lodge, MT 59722, (406) 846-3111.
www.kruseinternational.com
www.111cars.com/towe**

**Vehicles to be sold at the Sacramento, CA museum
Saturday, September 13, 1997.**

1903 CADILLAC MODEL A RUNABOUT, 1903 FORD MODEL A RUNABOUT, 1904 FORD MODEL B TOURING, 1905 FORD MODEL F TOURING, 1906 FORD MODEL K TOURING, 1906 FORD MODEL N RUNABOUT, 1907 FORD MODEL R RUNABOUT, 1908 FORD MODEL S RUNABOUT, 1908 FORD MODEL T TOURING (2 PEDAL, 2 LEVER), 1909 FORD MODEL T TOURING, 1911 FORD MODEL T RUNABOUT, 1911 FORD MODEL T TORPEDO W/DOORS, 1912 FORD MODEL T TOURING, 1913 FORD MODEL T EXPRESS WAGON, 1914 FORD MODEL T RUNABOUT, 1915 FORD MODEL T COUPLET, 1917 FORD MODEL T TOURING, 1917 FORD MODEL T STAKE TRUCK, 1919 FORD MODEL T CENTER DOOR SEDAN, 1922 FORD MODEL T COUPE, 1923 FORD MODEL TT FIRE TRUCK, 1923 FORD MODEL T RUNABOUT, 1923 FORD MODEL T FORDOR SEDAN, 1925 FORD MODEL T COUPE, 1926 FORD MODEL T COUPE, 1926 FORD MODEL T ROADSTER, 1926 FORD MODEL T TUDOR SEDAN, 1926 FORD MODEL TT GRAIN TRUCK, 1928 CHEVROLET COACH, 1928 FORD MODEL A TUDOR SEDAN, 1928 FORD MODEL A PICKUP, 1928 FORD MODEL A SPORT COUPE, 1929 FORD MODEL A BRIGGS FORDOR SEDAN, 1929 FORD MODEL A MAIL TRUCK, 1929 FORD MODEL A OPEN CAB PICKUP, 1929 FORD MODEL A PHAETON, 1929 FORD MODEL A ROADSTER W/RUMBLE SEAT (BALSAM GREEN), 1929 FORD MODEL A ROADSTER W/RUMBLE SEAT (DAWN GRAY), 1929 FORD MODEL A STATION WAGON, 1929 FORD MODEL A TOWN CAR, 1929 FORD MODEL AA STAKE TRUCK, 1930 FORD MODEL A DELUXE COUPE, 1930 FORD MODEL A DELUXE PHAETON (2 DOOR), 1930 FORD MODEL A STATION WAGON, 1930 FORD MODEL A TOWN SEDAN, 1930 FORD MODEL A TUDOR SEDAN, 1931 FORD MODEL A-400 CONVERTIBLE SEDAN, 1931 FORD MODEL A VICTORIA, 1931 FORD MODEL A CABRIOLET, 1931 FORD MODEL A DELUXE PHAETON (2 DOOR), 1931 FORD MODEL A DELUXE ROADSTER, 1931 FORD MODEL A FORDOR TOWN SEDAN, 1931 FORD MODEL A PICKUP, 1931 FORD MODEL A TUDOR SEDAN, 1931 FORD MODEL AA FIRE TRUCK, 1931 FORD MODEL AA MAIL TRUCK, 1932 FORD MODEL B DELUXE ROADSTER, 1932 FORD MODEL B STATION WAGON, 1932 FORD MODEL B DELUXE TUDOR SEDAN, 1932 FORD MODEL B-400 CONVERTIBLE SEDAN, 1932 FORD V-8 FORDOR SEDAN, 1933 FORD V-8 3-WINDOW COUPE, 1933 FORD V-8 CABRIOLET, 1933 FORD V-8 FORDOR SEDAN, 1933 FORD V-8 ROADSTER, 1934 FORD V-8 TUDOR SEDAN, 1934 FORD PHAETON MODEL C (RH DRIVE), 1935 FORD V-8 PHAETON, 1935 FORD V-8 PICKUP 1/2-TON, 1935 FORD V-8 STANDARD

FORDOR SEDAN, 1936 FORD V-8 CABRIOLET (MAROON), 1936 FORD V-8 CABRIOLET CREAM - RACER), 1936 FORD V-8 CONVERTIBLE SEDAN (WASHINGTON BLUE), 1936 FORD V-8 CONVERTIBLE SEDAN (WHITE-UNRESTORED), 1936 FORD V-8 ROADSTER, 1936 FORD V-8 STATION WAGON, 1937 FORD STANDARD @TOP, SEDAN (60 HP), 1937 FORD V-8 CONVERTIBLE SEDAN, 1937 FORD V-8 FIVE-WINDOW COUPE, 1937 FORD V-8 PICKUP 1/2-TON, 1938 FORD V-8 DELUXE PHAETON, 1938 FORD V-8 STANDARD TUDOR SEDAN (60 HP), 1939 FORD V-8 DELUXE CONVERTIBLE SEDAN, 1939 FORD V-8 DELL= TUDOR SEDAN, 1939 FORD V-8 STANDARD TUDOR SEDAN, 1939 MERCURY TUDOR SEDAN, 1940 FORD V-8 DEL@ COUPE, 1940 FORD V-8 DELUXE STATION WAGON, 1940 FORD V-8 STANDARD TUDOR SEDAN (60 HP), 1941 FORD MODEL 9N 4-CYLINDER PICKUP, 1941 FORD V-8 SUPER DELUXE.@ CLUB COUPE, 1941 FORD V-8 SUPER DEL= FORDOR SEDAN, 1942 FORD V-8 SUPER DELUXE TUDOR SEDAN, 1946 FORD V-8 SUPER DELL.@ CONVERTIBLE COUPE, 1946 FORD V-8 SUPER DELUXE FORDOR SEDAN, 1947 FORD V-8 SPORTSMAN CONVERTIBLE, 1948 FORD 6-CYLINDER SUPER DELUXE FORDOR SEDAN, 1949 FORD V-8 STATION WAGON, 1950 FORD V-8 DELUXE FORDOR SEDAN, 1951 FORD V-8 CUSTOM TUDOR SEDAN 1952 FORD N7-8 MAINLINE TUDOR SEDAN, 1955 FORD V-8 THUNDERBIRD 2-DOOR HARDTOP (W/TOP) 1957 FORD FAIRLANE SKYLINER RETRACTABLE HARDTOP, 1958 FORD V-8 FAIRLANE FORDOR SEDAN, 1959 EDSEL STATION WAGON, 1960 EDSEL 4-DOOR RANGER HARDTOP SEDAN, 1961 FORD FALCON 4-DOOR SEDAN, 1964 FORD GALAXY 500 V-8 CONVERTIBLE, 1965 FORD MUSTANG CONVERTIBLE, 1967 FORD FALCON 4-DOOR SEDAN, 1970 FORD MAVERICK 2-DOOR SEDAN, 1971 FORD PINTO 2-DOOR SEDAN

**Vehicles to be sold at the Deer Lodge, MT museum.
September 20, 1997.**

1903 FORD MODEL A RUNABOUT, 1903 FORD MODEL A RUNABOUT TONNEAU, 1905 FORD MODEL C RUNABOUT, 1906 FOP-MODEL N RUNABOUT, 1907 FORD MODEL K GENTLEMAN'S'S ROADSTER 6-40, 1908 FOR-MODEL S RUNABOUT, 1909 FORD MODEL T TOURSTER (TOURABOUT), 1910 FORD MODEL T TOURING, 1910 FORD MODEL T TORPEDO, 1911 FORD MODEL T TORPEDO RUNABOUT WO DOORS, 1911 FORD MODEL T TOWN CAR, 1911 FORD MODEL T TOURING, 1913 FORD MODEL T DEPOT HACK, 1913 FORD MODEL T TOURING, 1913 FORD MODEL T RUNABOUT, 1914 FORD MODEL T TOURING, 1914 FORD MODEL T RUNABOUT, 1915 FORD MODEL T RUNABOUT, 1915 FORD MODEL T TOWNE CAR, 1916 FORD MODEL T TOURING, 1917 FORD MODEL T TOURING (CANADIAN@), 1918 FORD MODEL T TOURING, 1919 STANLEY STEAMER LANDAULET, 1920 FORD MODEL T TOURING, 1920 T FORM-A-TRACTOR, 1921 FORD MODEL T ROADSTER, 1922 LINCOLN 4 DOOR SEDAN, 1923 LINCOLN 4 DOOR SEDAN, 1923 FORD MODEL T TOURING, 1923/5 FORD MODEL TT C-CAB TRUCK, 1924 FORD MODEL T CHASSIS, 1924 FORD MODEL T TOURING, 1924 FORD MODEL T ROADSTER (EDWARD TOWE'S RACER), 1925 LINCOLN DOCTORS' COUPE, 1925 FORDSON TRACTOR, 1926 FORD MODEL T FORDOR SEDAN, 1926 LINCOLN DUAL-WINDSHIELD SPORT PHAETON, 1927 MODEL T FORD - MERCURY SPEEDSTER, 1927 FORD MODEL T TOURING, 1928 FORD MODEL A COUPE, 1928 FORD MODEL A ROADSTER, 1928 FORD MODEL AR PHAETON, 1928 FORD MODEL AA FIRE TRUCK CHASSIS, 1929 FORD MODEL A ROADSTER, 1929 FORD MODEL A TOWN SEDAN, 1929 FORD MODEL A CHASSIS, 1930 FORD MODEL A PICK UP TRUCK, 1930 FORD MODEL A STANDARD PHAETON (GREEN), 1930 FORD MODEL A STANDARD PHAETON (COLOR UNKNOWN), 1930 FORD

MODEL A DELUXE PHAETON (TAN), 1930 FORD MODEL A DELUXE ROADSTER, 1930 FORDSON TRACTOR (IRISH), 1930 FORD MODEL A TUDOR SEDAN, 1931 FORD MODEL A 400 CONV. SEDAN, 1931 FORD MODEL A PICK UP (SOFT TOP), 1931 FORD MODEL A DELUXE FORDOR PHAETON, 1932 FORD MODEL B TUDOR SEDAN, 1932 FORD MODEL B OPENCAB PICK UP, 1932 FORD V-8 CABRIOLET, 1932 FORD V-8 DELUXE PHAETON, 1932 FORD V-8 SPORT COUPE, 1933 FORD MODEL CC GRAIN TRUCK, 1933 FORD V-8 STATION WAGON, 1934 FORD V-8 DEL@ PHAETON, 1934 FORD V-8 DELUXE ROADSTER, 1936 FORD V-8 1 1/2 TON FLAT BED, 1936 FORD V-8 PHAETON, 1936 FORD V-8 STAKE TRUCK 1 1/2 TON, 1936 FORD V-8 DEL@ FORDOR SEDAN, 1936 LINCOLN ZEPHYR 4 DOOR SEDAN, 1937 FORD V-8 1/2 TON PICK UP, 1937 JOHN DEERE A7 TRACTOR, 1937 JOHN DEERE "B" TRACTOR, 1937 FORD DELUXE ROADSTER, 1937 LINCOLNZEPHYR 4 DOOR SEDAN, 1937 FORD CLUB C.ABRIOLET (RH. DRIVE-E), 1938 FORD DELUXE STATION WAGON, 1939 FORD 1/2 TON PICK TT, 1939 LINCOLN ZEPHYR COUPE, 1939 FORD STANDARD COUPE (60 H.P.), 1939 FORD-FERGUSON TRACTOR, 1940 FORD DELUXE TUDOR SEDAN, 1941 FORD DELUXE STATION WAGON, 1941 FORD 1/2 TON PICK UP, 1942 FORD JEEP AND TRAILER, 1946 FORD MAIL TRUCK (6 CYLINDER), 1946 LINCOLN CONTINENTAL COUPE, 1947 FORD 1 1/2 TON GRAIN TRUCK, 1947 FORD SUPER DELUXE 2 DOOR SEDAN, 1947 LINCOLN CONTINENTAL COUPE, 1949 FORD 3/4 TON PICKUP, 1950 HOMEMADE TRAILER, 1950 FORD V8 CUSTOM 2 DOOR, 1950 MERCURY 4 DOOR SEDAN, 1950 LINCOLN COSMOPOLITAN 4 DOOR SEDAN, 1951 FORD CUSTOM 4 DOOR, 1951 FORD CRESTLIINE 2 DOOR SEDAN, 1951 MERCURY 4 DOOR SEDAN, 1955 LINCOLN CAPRI 2 DOOR SEDAN, 1956 FORD THUNDERBIRD, 1957 LINCOLN PREMIER 4 DOOR HARDTOP, 1958 FORD STATION WAGON, 1958 EDESEL CITATION 4 DOOR SEDAN, 1959 EDESEL RANGER 4 DOOR, 1959 LINCOLN PREMIER 4 DOOR SEDAN, 1959 FORD FAIRLANE 4 DOOR SEDAN, 1960 FORD STATION WAGON, 1961 FORD GALAXY 4 DOOR SEDAN, 1961 FORD THUNDERBIRD 2 DOOR, 1962 FORD FALCON 4 DOOR SEDAN, 1963 FORD THUNDERBIRD LANDAU, 1966 LINCOLN CONTINENTAL COUPE, 1966 FORD V8 MUSTANG 2+2, 1967 LINCOLN CONTINENTAL 4 DOOR, 1967 MERCURY MONTCLAIR 4 DOOR SEDAN, 1967 FORD RANCH WAGON, 1968 LINCOLN CONTINENTAL 4 DOOR, 1970 FORD GALAXY 2 DOOR HARDTOP, 1973 LINCOLN CONTINENTAL 2 DOOR HARDTOP,

1975 FORD GRANADA 4 DOOR, 1978 FORD RANCHERO. 1978 FORD THUNDERBIRD (NEW). 1982 GLIDER CAR TRAILER. 1986 FORD I TON, 5TH WHEEL. 1987 D.N.T.P. - CAR TRAILER. UNK FORD TRACTOR 8N. UNK EARLY FORDSON TRACTOR. UNK SURREY CARRIAGE



Trucks lined up for registration at the '97 Truck Show.



Mile Palmer's 1954 Divco (Best '54-'61 over 1 ton) one of three trucks chosen to be on the 1998 Truck Show T - shirt.



Trophy presentation at the '97 Whittier Truck Show.

CONVOY TO THE COPPER STATE IN '98

Next year the ATHS National Convention and Truck Show will be in Phoenix just after our 14th Annual Antique Truck Show in Whittier. While it is hard to help one of our associate chapters by "long distance", we can help by providing trucks! We hope many of the SCC-ATHS members will plan to make the *short* 350 mile drive. We also hope some of the other western chapters of ATHS will join us in the "Convoy to the Copper State in '98" convoy.

At our last meeting we voted to move our truck show to Sunday May 18th, the weekend before Phoenix. This will allow travelers from other states to participate in our show, see Southern California attractions and then continue on to Phoenix about Tuesday May 20th. If all goes as planned, this could be one of the largest rolling caravan of antique trucks ever!

Advance Planning Needed

- We need someone to act as Tour Coordinator for the out of state travelers. This person would help by providing information about motels/hotels and attractions in the area. A tour to Peterson Museum in Los Angeles on Monday May 19th was suggested.
- We need to advise members planning the trip of some of the possible problems
 - "Port of Entry" Arizona (and return to CA)
 - Licensing (Driver's Class A)
 - Vehicle Licensing (Historical Plates with a load, etc.)
 - Weight fees, Log books, Safety Inspections, etc., etc., etc.
- We need someone to act as advisor to help answer questions and/or "steer" them in the right direction. Again, Terry Klenske at Dalton Trucking will help in this area. The Arizona Chapter says they have a letter from the Department of Transportation that would allow exemption from some of the above problems, but it is still up to the individual states to regulate and/or enforce as they see fit.
- We need someone to coordinate members that need to have their trucks transported, as well as those willing to transport other members trucks.
- We will need to have articles in the newsletter, and/or a "Q & A" meetings (either a regular chapter meeting or special meetings) addressing some of the possible problems

Other Questions

- Should we have a "pre-convoy" drivers meeting (& BBQ?) the night before we leave?
- How early should we leave from Fontana (maybe with two departures several hours apart)?
Early departure for slower vehicles (40-50 mph) Later departure for faster vehicles (55-65 mph)
- Should we plan "scenic" stops (General Patton Museum, etc)?
- Should we plan an overnight stop in Blythe as a meeting place for those from other north and western locations?
- Should we plan a potluck BBQ for the overnight in Blythe? A member knows of someone that has some acreage in Blythe, and would be willing to allow camping and/or overnight truck parking. Motels are available in Blythe at all price ranges for those not wanting to camp. Or contact a local truck dealership for parking arrangements.
- Can Arizona Chapter send a "pilot truck" to guide us to the convention site either near the border or just outside of Phoenix?
- Can we get a pilot car (antique police car) to escort us out of town? Get local news coverage?
- Does anyone know contacts for possible sponsors (Truck/Engine Manufacturers, Oil Companies, Supermarkets, etc.)?

Huell Houser, of KCET TV (a PBS station out of LA), is interested in having our convoy be part of one of his "California Gold" or "Visiting with Huell Houser" shows. He would probably be riding "shot gun" in various trucks, and change at various rest/fuel stops. He is also planning a show featuring the Hayes Museum in Woodland, and possibly our show before the convoy. We are also working with Arizona Chapter to try to get Arizona Highways magazine and their PBS TV station to get Arizona coverage.

As with all of our events, we need your help and input to make this a successful event. Don't be bashful, please volunteer to help! Hopefully the convoy won't get too big and complicated, but it could be quite a one time adventure!

1953 Kenworth D99 COE by Terry Klenske

I first noticed my future Kenworth COE, which became known as either #3 or "Bruce", in 1977. Shortly after I purchased Dalton Trucking, I noticed it parked down the street from our truck yard. The owner, P&M Truck Salvage, was advertising it without really trying. After a few years, he moved it across the street, and it was a little more out of sight and mind.

Some time in 1985, I started thinking about the Kenworth's potential for restoration. One day I decided to stop by and talk with the owner, Tom Meshigan. After a little discussion, it was discovered that the truck was minus an engine, and could be had for \$750 — talk about "tip of the iceberg"! I purchased the Kenworth, and the lengthy process of restoration began.

I purchased another '52 COE Kenworth for parts, and \$400 later I had a pretty decent grill and a complete parking hand-brake assembly, as well as the rest of the parts truck. It was a non-sleeper, though, and was also short an engine. The cab and chassis of that parts truck has since been recycled into beer cans or some other product.

I thought initially I could do just a quickie-type restoration - a little Bondo and paint, plus an engine. I soon discovered the repairs were going to be much more extensive. At some point in the truck's life, it had been involved in an accident, and the front end had been cobbled back together.

Additionally, a nose-mount reefer unit had been crushed into the top of the cab, even though the top rear of the cab had a concave indentation to prevent such a thing from happening.

It soon became apparent that the cab had to be removed from the chassis for rebuilding. This presented the opportunity to install an engine and to stretch the frame to accommodate a 24' flatbed (useful for hauling other antiques). The original wheelbase was 162"; the current wheelbase is 218".

The engine posed its own challenge. I wanted to install a supercharged Cummins that would be reminiscent of the "Cadillac" image that this truck projected. The proper combination of cam, timing, and pistons was elusive. It took three tries before the engine would make a complete revolution. On the first and second tries, the valves would open against the piston, thus preventing the engine from completing a revolution. Fortunately, this problem had been anticipated, and the engine was being turned over by hand. Imagine the results if the appropriate starter had been turning the reciprocating assembly!

Although Kenworth had earned a reputation as a well-established truck manufacturer by 1953, cab overs represented a relatively new venture for the company. At that time, a number of states severely limited the overall length of trucks; fifty feet was the maximum for states such as Iowa. Sleepers were becoming important in the early 1950's as trucks increasingly hauled refrigerated freight (beef, cheese, candy) formerly hauled by the railroads from the

Midwest to West Coast destinations due to more timely deliveries; California produce (everything from apricots to zucchini, but mainly citrus and lettuce) was then hauled back. If you were going to the West Coast, you needed a really short wheelbase 3-axle tractor with a sleeper. It's no surprise that the initial cab over applications were mostly short wheelbase 3-axle tractors with sleepers. Our Kenworth was an early assembly, being only #407 off the assembly line.

Because of Kenworth's exposure to ex-aircraft engineers from Seattle-based Boeing, their COE's design incorporates a unique blend of both steel and aluminum. In order to save weight, many parts were made from lightweight 1 "xl steel angle. Aluminum was used everywhere possible in order to save weight. The sides of the cab are bowed out slightly, similar to a wing - the "Boeing effect". This is the first cab over to feature a full-width sleeper design. Although not as technically advanced as Peterbilt's COE at the time, (the cab wouldn't tilt like the Peterbilt) it combined many unique features, such as hinged floor boards and a fold-up doghouse. These features were needed in order to facilitate engine maintenance.

The power for this truck comes from a Cummins NHRS 320 H.P. In 1953, this was big power! The introduction of the high lift cam which turned 200s (HP) into 220s resulted in making 275s into 290s, and 300s into 320s. Not only did the high lift cam increase horsepower, it also took a lot of the "bark" out of the 275. The main transmission is a Fuller 905 twin-countershaft transmission, and features a so-called short fifth; i.e., fourth direct, fourth over, then fifth over. That is to say, fifth over is the only progressive up-shift from fourth over. The auxiliary transmission is a Spicer 8031 G, while the rear end is a Timken U200.

Note that it is a rear-drive pusher-axle tandem. This helps to avoid becoming low-centered while going through a dip and losing traction on the middle drive axle. This usually happens when the truck is empty and there is only minimum weight riding on the center axle.

Bias-ply fabric tires and aluminum 5-hole tube-type wheels were standard features on trucks of this era. The emergency hand brake is set by first applying the brakes by depressing the foot valve, and then pulling up on the emergency hand brake. The parking brakes are released in the reverse order. This truck is now set up as a hay rig with a 24'bed. It also pulls a 1936 Weber 3- axle 28' pull trailer. A good driver babying the 320 could still make a living with this combination. It would be slow, temperamental, and hard on fuel, but otherwise haul a good payload.

It has been lovingly restored by Dalton's Shop: A.J. Marchman, Shop Superintendent, Gabe Cisneros, Randy Kahrs, Dan Meekins, Body Shop Foreman, and Al Leon, Service Foreman.

Up - Coming Events 1997

American Truck Historical Society Southern California Chapter

1997

- August 10** **Long Beach Hot Rod High Performance Parts Exchange**, Long Beach Veterans Stadium, 800. 762. 9785.
- August 16** **5th Annual SCC - ATHS Picnic**. Los Rios Rancho, Oak Glen, CA.
- August 16** **3rd Annual Mountain Classic Car Show**, Wrightwood, CA, 7:00am - 4:00pm, registration 7-10:00 am, \$20 before 8/1 or \$25 after, Information call, Bettye (619) 249-6471.
- August 23** **Pacific NW Truck Show, Oregon Trail Chapter ATHS**, Brooks, OR, Call for Info (503) 652-1458.
- August 24** **Pomona Antique Auto, Corvette, Porsche, Street Rod & VW Swap Meet**, LA County Fairplex, Pomona, CA.
- Sept. 6** **Los Rios Hoedown Charity Car Show**, Los Rios Rancho Apple Orchard, 39610 Oak Glen Rd. Oak Glen, CA, 10:00am - 4:00pm, \$20 before 8/15 or \$25 after, Lyle & Diane Loomis (909) 763-4545 or Pat Ford (909) 849-9448.
- Sept. 13** **Original Antique Fire Apparatus Show**, Wrightwood, CA.
- Sept. 14** **Long Beach Hot Rod High Performance Parts Exchange**, Long Beach Veterans Stadium, 800. 762. 9785.
- Sept. 17** **SCC - STHS Annual Planning Meeting**, Dunkel Bros. Trucking, Anaheim, CA.
- Sept. 18-21** **Route 66 Rendezvous**, E Street and Court St., Downtown San Bernardino, CA.
- Sept. 27** **Chino Valley 3rd Annual Muster & Chile Cook-off**, Chino Fairgrounds 5410 Edison Ave. Chino, CA. (909) 597-7775
- Sept. 27-28** **Escondido Deer Park and Winery 1st Annual Antique Truck Show**, Escondido, CA. Hosted by group from the Motor Transport Museum,
- October 4-5** **Truckin for Kids, Truck Drags**, Palmdale, CA.
- October 5** **Long Beach Hot Rod High Performance Parts Exchange**, Long Beach Veterans Stadium, 800. 762. 9785.
- Oct. 11-12** **Fortier Truck Show and Barbecue**, Fresno, CA.
- October 12** **9th Harvest Time Fun Run and Classic Car Show**, Yucaipa High School, Yucaipa, CA, 8:00am - 3:00pm, \$10, Annette Book (909) 797-3796. (Pancake breakfast 6:30 - 10:00 am YHS Athletic Dept., \$3.)
- October 12** **California Chapter SPAAMFAA Pump-In**, Meniffee, CA.
- October 12** **Pomona Antique Auto, Corvette, Porsche, Street Rod & VW Swap Meet**, LA County Fairplex, Pomona, CA.
- Oct. 17,18,19** **Truck Show, California Speedway, NASCAR Sears Craftwman Series Truck Race**, California Speedway, Cherry Ave. Fontana, CA. For club participation contact Ken Lund, 909.794.2616.
- Oct. 18-19** **Threshing Bee, Antique Engine & Tractor Show**, Antique Gas & Steam Engine Museum, 2040 N. Santa Fe Ave., Vista, CA (619) 941-1791 or (800) 5-TRACTOR (587-2286)
- October 19** **Loma Linda Fire Dept. 75th Anniversary Parade and Mini Muster**, Loma Linda, CA, (909) 799-2853.



- October 26** **13th Annual Autumn Truck Run**, Riverside to Fallbrook. Bobby Babbcock's Collection of vehicles and barbecue.
- November 2** **Veterans Car & American Motorcycle Show**, Loma Linda, CA, Jerry L. Pettis VA Medical Center. 8:00am - 3:00pm, \$15 before 10/29 or \$20 after. Contact Larry (909) 823-8569.
- November 9** **Long Beach Hot Rod High Performance Parts Exchange**, Long Beach Veterans Stadium, 800. 762. 9785.
- November 23** **Pomona Antique Auto, Corvette, Porsche, Street Rod & VW Swap Meet**, LA County Fairplex, Pomona, CA.
- November 30** **Long Beach Hot Rod High Performance Parts Exchange**, Long Beach Veterans Stadium, 800. 762. 9785.
- December 6** **Annual Fire Flea Market**, Pioneer Fire Museum, San Bernardino, CA
- December 7** **Gunther's Yard Meet, Southern California Chapter - ATHS**, 2380 Curry St., Long Beach, CA. For more information contact George Gunther (310) 429-1597.
- December 14** **Long Beach Hot Rod High Performance Parts Exchange**, Long Beach Veterans Stadium, 800. 762. 9785.

1998

- May 17** **14th Annual Souther Calif Chapter ATHS, Whittier Truck Show**, California High School, 9800 Mills Ave, Whittier, CA, Contact Ron Berg 909.880.1807 or Ken Lund 909.794.2616.
- May 20** **Convoy to the Copper State,**
- May 22-23-24** **1998 National ATHS Truck Show and Convention.**

Send information about important events to: Dan Gosnell, Editor, SCC - ATHS, 5505 N. Mayfield Ave., San Bernardino, CA 92407 (909) 883-1091



Terry Klenske, wife Ellie, dog Rascal with their 1953 Kenworth D99 COE. Picture was taken just prior to setting out for the 1995 ATHS Nationl Truck Show in Spokane. His 1948 Autocar is on the back.





**Southern California Chapter
1732 Parkview Circle
Redlands, CA 92374**



IF YOU HAVE ANY PROSPECTIVE MEMBERS OR A GROUP THAT YOU WOULD LIKE A NEWSLETTER SENT, PLEASE CONTACT THE EDITOR.

**14th Annual
Souther California
Antique Truck Show
Sunday May 17, 1998**

**Hosted by Southern California Chapter ATHS at
California High School,
9800 Mills Ave, Whittier, CA**

**Open to Pre-1973 American made light to heavy trucks, farm tractors,
fire apparatus, military vehicles, "Pomona Haulers" (wagons), swap
meet, food, books, toys, and more. admission: Show Truck - \$10 (\$8
if pre registered by April 1, 1998) General Admission: Adults \$3,
Youth (12-16) - \$1, Under 12 free. For More Information Call:
Cal. High School Activities Office 562.698.8121 (ext 3911)
or Ron Berg 909.880.1807 or Ken Lund 909.794.2616**