

American Truck Historical Society
Volume Sixteen Number Six

Southern California Chapter
November / December 1996

Express Newsletter



Submitted by Kenneth W. Tisd, Secretary/Treasurer



American Truck
Historical Society

Southern California Chapter

1996 Officers and
Board Members

President

Mark Christensen (909) 883-1955

Vice President

Ron Berg (909) 880-1807

Secretary/Treasurer

Ken Lund (909) 794-2616

Historian

Bob Kennison (714) 997-5767

Editor

Dan Gosnell (909) 883-1091

Board Members

Tom Bell (310) 867-6711

Doug Graft (714) 639-5319

Leigh Knudson (714) 645-5938

Larry Laughlin (909) 794-5394

Herb Deeks (714) 774-7326

Rich Yost (909) 881-5526

The "EXPRESS NEWSLETTER" is published six times per year by the Southern California Chapter of the American Truck Historical Society.



ATHS - SCC

General Chapter Meeting

December 1, 1996
Gunther's Yard
Meet

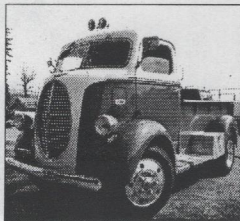
A chapter meeting will
be held during the day
at the Meet.

2380 Curry St. Long
Beach, CA

Calif Thomas Bros. Map
Page S, Reference E-1

For agenda item contact
Pres. Mark Christensen (909)
883-1955

PRESIDENT'S MESSAGE

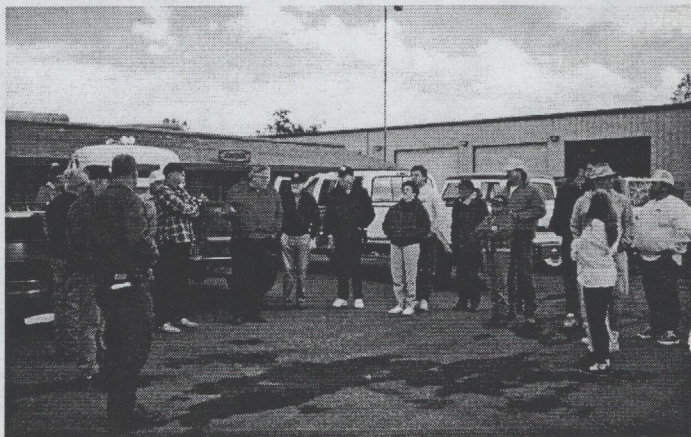


Hello, gang! We have been working our way through fall and all of our events have been going well. In my last message I stated that we were going to Vista to the California Early Day And Gas Engine & Tractor Assn., Inc.'s fall show and threshing bee. Two motor homes with families were in attendance. We saw many recognizable faces both Saturday and Sunday from our chapter. The weather was cloudy but no rain and when the sun came out it was nice and warm. We had a good time.

The next weekend we showed up at 8:00 a.m. at Howell's Cafe and we just about filled up the place, even though the wind was blowing a little. About 9:00 we proceeded to **Dalton Trucking** where **Terry Klenskies and his sons** showed us around the different operations of his business. We went through the body shop, the truck wash, to moving of the biggest trailers they have. The three hours we spent there were very interesting. About noon we left there and caravanned through the different cities until we reached Yucaipa. Our next destination was **Louis Birch's** the tractor farm. Louis has some very interesting and rare tractors he has been collecting over the last five years. He has tractors from the garden variety to a D-8 and some very interesting road graders. The house, property and tractors were awesome. He even had a restored Pierce Arrow truck. Louis, you have a very interesting place; Hot to visit again. Thanks for your hospitality.

From Louis' we took a short drive to **Terry Klenskies's house** in Crafton. **Terry** and his wife **Ellie** live in the middle of an orange grove. He stores his trucks and tractors in a big Butler building. While the barbecue was getting hot, we had tractor rides, a tour of his place, kicked a few tires and got acquainted with some new people. We really had a good time. Thanks, Terry, Ellie, and the gang for putting on a real fun event. Hope we can do this again.

The next chapter get together was our trophy workshop at **Larry Laughlin's house**. A small group of us went to breakfast at Arthur's Restaurant in Mentone. After breakfast we took a short drive over to Larry's house. After working with trophies top, we went to **LMR Enterprises in San Bernardino**. Some of us took the trophy toppers, bead blasted, welded them on mounting fixtures and created interesting trophy toppers. The rest of the group worked on the club trailer we acquired for repair. The trailer is a 16' 1957 ex-**Southern California**



Edison Silver Streak outfitted as a construction shack with cabinets, counters and an old refrigerator. We pulled out some cabinets and pulled up part of the worn floor to find out that part of the frame was well worn. After we'd made a full day of it, we decided we still had at least one more day to finish all of it. We will scheduling another day to finish the trophies.

See you at **Gunther's Yard**. Don't miss it.

Mark



NOVEMBER UPDATE 1996

Bank Balance as of 11/13/96 \$4,478.39

Since there have been no meetings since September 18. Here is an update of some of the club activities.

Membership renewals for 1997 are arriving daily. Thanks to everyone else who has renewed, we really appreciate it. For the others, remember, dues are January to December, and if you see a "96" on your newsletter mailing label, send your 1997 dues as soon as possible. We don't want you to miss any of our newsletters, especially the special color May-June issue.

The last club event was the Autumn Antique Truck Run. It was held October 26 and began with a "truck stop" breakfast at Howell's Farmhouse Cafe in Fontana. Approximately forty people were in attendance, arriving in an array of 16 antique trucks and other vehicles. Next we were provided an excellent tour of Dalton Trucking by Terry Klenske. It was fascinating to see, a skilled driver back a truck and trailer (a Murray "9-axle") over 100 feet distance and around corners. We also learned about transfer dumps, and a special ramp trailer with a retracting rear axle assembly, the paint and body shop, and line maintenance shop. From there we went to Yucaipa. You should have seen the look on people as we drove through each town. That alone was almost worth the trip. In Yucaipa, we went to Louis Birch's farm and viewed his excellent collection of farm tractors. So many tractors! Next we went to Terry Klenske's home in Redlands for a barbecue. Thanks to all who attended. Next year's Autumn Antique Truck Run is tentatively planned from Riverside to Fallbrook or Escondido. We'll keep you posted.

On Saturday November 9 we met at **Arthur's Restaurant (Art Dodge's), in Mentone**. From there our group (**Mark Christensen and Henry, Steve Sackett, "Stretch" Berg, Rick Perez, Larry Laughlin, Dan Gosnell and Ken Lund**) went to **Larry Laughlin's** shop to sort out and organize our trophy parts, and plan the strategy for assembly. From there most of the group went to Mark's shop to "bead blast" the parts and weld studs, in preparation for the powder coating. This also provided an opportunity for the group to do some preliminary assessment and work on the trailer our club has use of.

About the trailer, **Sunwest Materials had a 1957 Silver Streak** trailer in their scrap heap at their Redlands rock crushing yard. It was originally a So. Cal. Edison mobile office, and used by Sunwest as a "scale shack" until a newer and larger one was built some years ago. They have donated its use for us to store our awnings, signs, etc. We can use it for as long as we want, if we pay for routine maintenance. Overall, a pretty good deal, for virtually nothing. We hope to have it ready to roll by May as "command central" at the truck show.

The next event will be December 1 at **Gunther's Yard** in Long Beach. This is always a fun, low-cost run, and another opportunity to take the old truck out for a little "exercise" and look at old tractors, gas engines, an other neat old rusty stuff. George will have the "speeder" ready for rides, and will have hot dogs and sodas for sale. You can also help with the Holiday Spirit by bringing non perishable food and/or an unwrapped toy for **Operation Christmas and Toys for Tots**. Don't forget to bring that special part or item for judging as the best trophy top, and a chance for prepaid 1997 dues. As usual, this should be a great family outing. A group will collect at Flo's Airport Cafe in Chino at 8:00 to caravan to Long Beach.

If you want to help with the planning and operation of the club, several officer positions are available. The president and vice president will be vacant, as well as some board of director seats. We will have a brief meeting at George's, and "swear in" (not at!) the new officers.

To help promote the **Truck Show**, we have signed up as a group entry in the **Whittier Christmas parade on Saturday December 7**. We are allowed **8 vehicles**, and can pass out flyers to the crowd. Don't be bashful, we would really like to show off a collection of trucks from various eras, military, fire engines, etc. If you would like to participate, please call **Ken Lund (909)-794-2616** for more details.

That's all for now. Remember, we have all kinds of Truck Show flyers, promotional posters (some with 1997 calendars), and T-shirts. For someone *really special*, we can even make a teddy bear with a miniature truck show shirt (Cost: \$15.00). We'll bring our collection of goodies to George's for distribution.

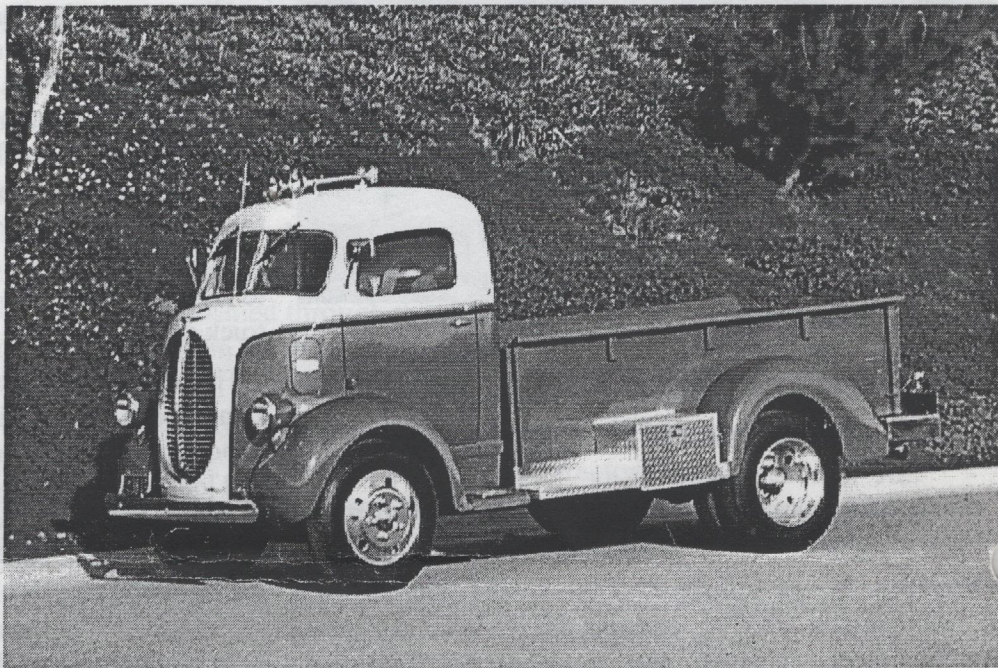
Submitted by **Kenneth W. Lund, Secretary/Treasurer**

History of Mark's Truck

By Mark Christensen

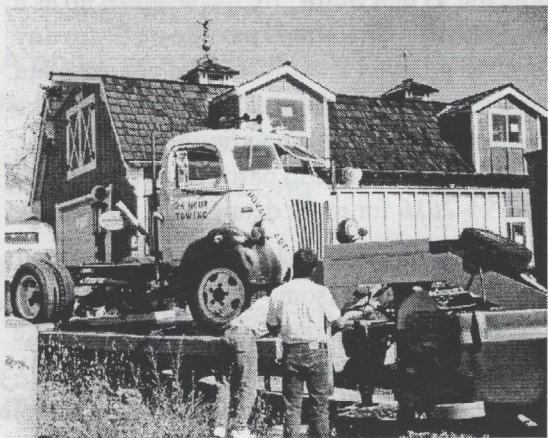
Well, I guess it all started when I met my wife Diane. In 1978, my wife and I moved into a late 1800's vintage cottage that my grandfather owned for 50+ years. We didn't have anything but hand-me-downs and we inherited what furniture we had. That's when it started—the love for old things. Lots of antique shopping, yard sales and junking helped furnish our house. I have always had a love for cars and have had a slew of Volkswagens and numer-

ous foreign and domestic wheels. We were antique shopping one day in Mentone when we stumbled across Art and Betty Dodge's antique emporium. While Diane was looking on the inside, I was looking on the outside and saw Art's 1938 COE. I brought Diane out to look at it and she fell in love with it too. We knew this had to be our next project, the search was on. We searched in back yards and places where there was old stuff. And everything was a long ways away. One day I went back out to talk with



Art and he had two Ford COE project trucks. On February 14, 1987, we became the proud owners of a beat up cab and chassis, including wheels and tires, no motor or trans or seats.

What do you do when you don't have all the parts? You look for a parts truck! Diane found our parts truck on a dairy farm in Ontario. It just happened to belong to Bert Van Dyke. The first truck was a 1942 and the second one was a 1940 so I combined the parts of both to put my truck together.



Next I had to figure out what to do with this thing. Without a motor, trans, or bed, my options were wide open. I knew I would be driving it all the time so I opted for a newer motor and trans. The biggest engine that would fit without a lot of cutting or welding was a Chevy 350. I knew the transmission had to be heavy duty so the search was on for something Chevrolet and that was sturdy. I came across a Turbo 475 out of a Snap-On tool truck. It even had an emergency brake drum on the back. Since the rear end didn't have emergency brake cables, this solved that problem. Knowing that I wanted to drive it all the time, I didn't want bias ply tires. I looked for radials which were the 750 X 20 stock size. They were next to impossible to find. In my searching, Ford bolt pat-

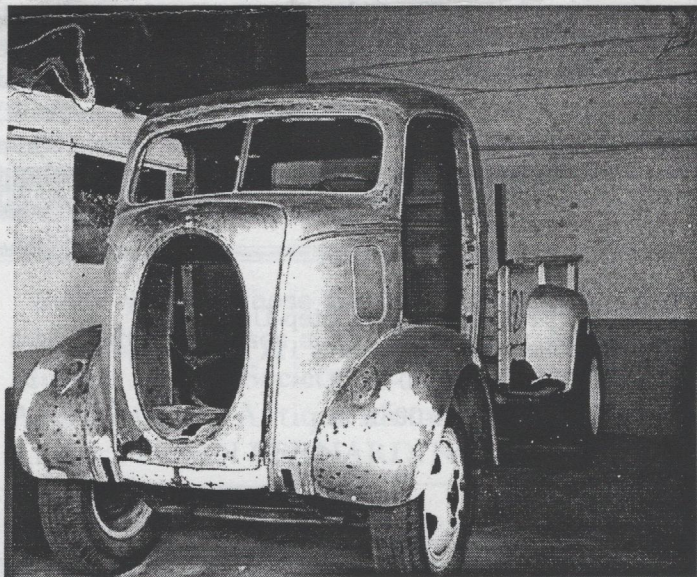
tern and Dodge bolt patterns are exactly the same. 19.5 wheels had lots of tire sizes to choose from that were radials. I called Century Rim and Wheel for the new Alcoas. I found a set of used tires which were in good shape and mounted them on the Alcoas and immediately put them on the truck even though the truck wasn't close to being finished.

After working on the body work on the cab, filling over 100 holes, and removing the five layers of paint to bare metal, I decided to look for a bed. The bed on Art's truck is a nine foot express bed of a 1953 Ford F-350. The search was on. They made that same bed (as far as I know) until the 70's, but I still couldn't find one in decent shape. I purchased an eight foot bed from a junk yard, put it on the frame rails but it just didn't look right. I knew I needed to have a longer bed. That's when I decided to build a bed. I took the eight foot bed apart, measured it, and found someone who had the equipment to bend it. Since the material for the bed sides comes in 4' X 10' sheets, I decided to make the bed ten feet long. The two sides were made out of one sheet of steel. The next thing to be done was to find the tail gate with the Ford script logo. I found one at the Pomona Swap Meet but it was made for a half ton and was too small. I had to modify it to fit the new bed. Next, I began to look for rear fenders and figured that vintage Ford would be a good place to start. Everything I found was either rusty or beat up. So I opted to go to fiberglass and had to widen them 3 inches to fit over the dual rear tires. When I talked to the fiberglass vendors, they informed me they made fiberglass front fenders and running boards for COE's. So I bought running boards too.

Another problem came up. The rear end was too low geared to drive every day. 589s wouldn't cut it and that was in high range! I couldn't find a gear set, so I went out and found a rear end out of a 1987 motorhome. I had to narrow it, change the outside spindles, and respline the axles so my wheel and tire combination would still stay the same. My other project was putting power steering on. My first steering box came off a one ton Chevy truck. I modified it to fit the cab. The pitman arm amazingly bolted right on from the Ford to the Chevy! But the problem was when you turned the steering wheel left the wheels would turn right. If that was the only vehicle I owned I guess that would be all right. But it wasn't. So I had to find a different steering box. Dodge four wheel drive had the same box as the one I had but when you turned left, the wheels turned left too. Whew! After the modification with air conditioning and a couple of bouts with the brakes, we were ready for paint. If we didn't paint it soon, I was going to have to take a torch to it!!! The colors came from my Volkswagen genes. I wanted to pick a color which had a vintage look to it. The blue came from early VW transporters—Dove Blue. The white was '76 Ford truck color. I wanted the belt line to stand out so I used three candy colors—red, blue and the yellow is yellow with silver mixed in which started to turn it green. So we stopped.

After the paint and a little chrome, I built the rear bumper out of a piece of 9" channel iron. The bumper corners are made out of 4" pipe. I had to have a trailer hitch too. The tool boxes are built out of 1/4" aluminum diamond plate and are placed in front of the rear wheels along side the bed.

After the upholstery was done, I installed the tinted windows, VDO gauges and Alpine stereo. I drive this truck every day to work just as I intended when I first began to put it together. I also drive it to shows and when searching for old trucks. This truck has been a lot of fun and I've met many nice people as a result of driving it.



December 1, 1996

SCC - ATHS

Gunther's Yard Meet

2380 Curry St. Long Beach, CA

Calif Thomas Bros. Map

Page 5, Reference E-1

For more information contact

George Gunther (310) 429-1597

BUY YOURSELF SOMETHING NICE FOR CHRISTMAS

I saw an ad in the December 1996 issue of Motor Trend, Truck Trends section that seemed like a good idea for those "search and rescue missions" under the hoods of the old truck. It is a step that clamps over the top of the (front) tire. The step is 8.5" x 22" and has 3 levels, 4" apart. When not in use the platform folds for storage under or behind the seat, or on the garage wall. The suggested retail price is \$39.95.

Ken L.

Contact:

PACIFICA PRODUCTS "Step-Up",
43214 Blackdeer Loop, Box 111 Dept. MT,
Temecula, CA 92590-3473.

Or phone 800-308-0082.



Just some of the truck at the '97 Fortier Truck Show in Fresno.

VEHICLE SALE BY BILL LEUER

316 E. BLAINE ST. RIVERSIDE (909) 682-2053 OR (909) 369-0808

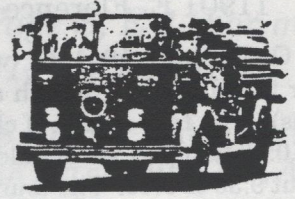
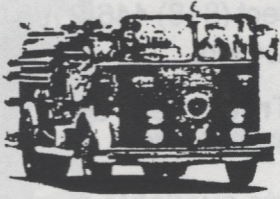
I must make room for up coming projects. The following vehicles from my collection are being offered for sale:

- 1953 FWD FIRE TRUCK, All-Wheel Drive, good condition, good paint, with extra fire equipment. **\$3500**
- 1950 FORD, F-6, Marmon Herrington All Wheel Drive, cab and chassis, good sheet metal, less than 20,000 original miles on truck. **\$1000**
- 1928 GRAHAM BROTHERS TRUCK 2 ton, limited number built, 6 cyl, historical vehicle, came from the gold mining area of Bodie, CA. Disassembled. **\$800**
- 1925 TO 1927 GRAHAM BROTHERS TRUCKS - 1 1/2 Ton. Three to choose from. Poor condition but lots of parts. **\$500**
- 1925 GRAHAM BROTHERS TRUCK, 1 Ton, Flat bed, wood spoke wheels, needs to be rewooded, but fairly complete. **\$1500**
- 193? COLEMAN TRUCK - All-Wheel Drive, historic and rare truck once owned by the National Park Service at Crater Lake National Park. **\$1500**
- 1950 STUDEBAKER PICKUP TRUCK. Parts Truck. **\$250**
- 194? STUDEBAKER TRUCK - 1 1/2 Tone parts truck. Complete drive line, some good sheet metal. **\$250**
- 1974 LINCOLN CONTINENTAL - MARK IV - 2 DOOR - 100,000 miles, leather interior, excellent condition, original one family owned, well maintained, garaged. **\$2500**
- 1969 WOLVERINE ALL - TERRAIN Vehicle - 8-Wheel Drive, floats, V4 Ford industrial motor. A blast to drive. **\$1000**

I will also be selling some of my one cylinder gas engines, old boat motors and flat belt machinery.

Society for the Preservation and Appreciation of Antique Motor Fire Apparatus in America

'97 Winter Meeting & Muster
SAN BERNARDINO, CA



February 13 -16,1997

Displays - Demonstrations - Workshops - Tours
and
Motorized/Steamer

ANTIQUÉ FIRE APPARATUS
Parade & Muster

Saturday, February 15, 1997 rain or shine!

Sponsored and hosted by the
CROWN FIRECOACH ENTHUSIASTS

**Southern California Chapter of SPAAMFAAP
Muster hosted by the San Bernardino City Firefighters
Accommodations provided by the Raddison Hotel, San Bernardino*

*For more Information, contact
Displays - Kent Cullom 310/394-8477
Parade - Dave Steinitz 310/652-9628
Muster* Steve Shaw 909/864-6179*

SPAAMFAA conference - Ron Leatz 619/243-4536

*For further information about the conference write to:
Crown Firecoach Enthusiasts, 34681 Calle Fortuna, Capistrano Beach, CA 92624
E-mail: crownclub@aol.com*

BRING YOUR ANTIQUE RIG TO PARADE OR DISPLAY

Article from Crown Firecoach Enthusiasts Inc. Newsletter 96-5

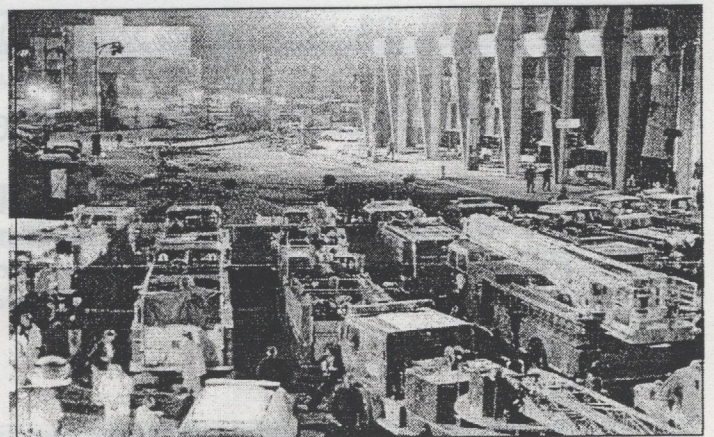
Crowns at the Movies

A volcano erupts from the La Brea Tar Pits. Red hot molten lava flows down Wilshire Boulevard incinerating every building in its path. Impossible? Well, not in Hollywood. Twentieth Century Fox recreated a five block stretch of Wilshire Boulevard on a parking lot at the McDonald Douglas plant in Torrance.

The production of the movie "**Volcano**" starring Tommy Lee Jones, utilized twenty one pieces of fire apparatus most of which were Crowns. They were supplied by Crown Firecoach Enthusiasts member **Dan Gold** and his company "**Dan Gold Fire Protection Specialists.**" Dan used Crowns owned by CFE members including **Ron Dierkens, Joe Diggs, Bill DunDas, Mike McDonald, Jim Mihalka, Kevin O'Connell, Mike Palmer, and Pat Sweetland.** Others supplying Crowns were **Bryan Batiste** from **Foothill Fire Academy,** and **Randy Marsile.**

Watch for "Volcano" coming to a theater near you in the spring or summer of 1997. Ron Dierkens.

Better yet, see those **Crowns and other fire apparatus** in person at the '97 Winter Meeting & Muster of the Society for the Preservation and Appreciation of Antique Motor Fire Apparatus in SAN BERNARDINO, CA, February 13 -16,1997.



HATHAWAY RANCH TOUR

January 18, 1997

11901 E. Florence Ave., Santa Fe Springs

On January 18, 1997, we have group reservations to tour the Hathaway Ranch and Home (see map for directions). The tour is free of charge, and scheduled to begin at 10:00 a.m., so we should plan on meeting there from about 9:30 to 9:45. The tour should last about 1 1/2 hours.

The tour will include the Hathaway residence, built in 1933, as the centerpiece of the ranch. It is still used by Nadine Hathaway as her home, and open for tours on weekends. It is not a typical museum, but an accumulation of artifacts collected by three generations of the Hathaway family.

We will also be touring the grounds and "north 40." The grounds hold over 100 years of farming, ranching, and oil drilling equipment. The collection includes turn-of-the-century gasoline engines, a 1941 International "Woody" (with 1.2 million miles!), a steam tractor, and many other items reflecting the Hathaway's love of machines.

After the tour, you're on your own, but we may go as a group to Whittier (approximately 5 miles north) for lunch. In Whittier (at Whittier Blvd. and Penn Ave.) is King Richard's Antique Mall, a 75,000 sq. ft. building that was originally built in 1903 as the Whittier packing house. There's lots to see (and buy?), including an automobile collection.

Bring your old trucks if you want, but it is not necessary. This should be a good outing with the cost limited to meals and any other purchases. We hope you can make it.

Wanted: Grille tooth and backing for 1946 Chev. C.O.E. Will consider purchase of whole lower grille. Also **wanted 1940-47 Ford C.O.E.** Ernie in Arcadia, CA. Collect (818) 446-2195 Days or FAX (818) 446-8011, 24 Hrs.

For Sale: 1931 Chevy Truck, Less than 10,000 miles, Brad Ruppert (619) 949-7653

1997 Truck Show T shirts available now. \$10. Contact Mark Christensen (909) 8831955, or Ken Lund (909)794-2616.

Wanted: 1915-35 Small Bus. Also **wheels and tires for 26 GMC truck.** Louis Woods (909)737-0933.

Wanted: Chev '50-'55 1/2 Ton Pick Up or Ford '50-'56 1/2 Ton Pick Up. Michael Levin (310) 476-0989.

Wanted: 1927-28 International 1 1/2 Ton Flat bed Truck. Harold McGee, 18162 Norwood Park, Tustin, CA, 92680 (714) 544-9046.

Looking for a **copy of AHS Ontario '89 Show Video.** J.L. Luina, 31949 Hwy. 94, Cameo, CA. 91906 (619) 478-2810

Happy Holidays from
Southern California Chapter
ATHS.



This is an example of a proposed ball cap design. The design consist of a yellow or gold state of California, white "Southern California Chapter", color ATHS shield, and red "American Truck Historical Society". Cost will be approx. \$12 - \$14. Caps will be dark blue, wool or cotton. Let Mark or Ken know what you think about the design.

1997 Memberships are Due!!

If a *96 appears on your Newsletter label, your 1996 membership fees are past due. Don't miss an issue of the Chapter's "Express Newsletter" or the National's "Wheels of Time." Please send your membership dues in now. Membership forms for the Chapter and National are enclosed in your Newsletter.



1996

- December 1** **Gunther's Yard Meet, ATHS-SCC, 2380 Curry St., Long Beach, CA, Calif Thomas Bros. Map Page S, E-1. For more information contact George Gunther (310) 429-1597.**
- December 7** **Pioneer Fire Company Museum's Fire Dept. Antique and Memorabilia Flea Market, 247 S. Boyd, San Bernardino, CA, Allen Bone (909) 792-3827 or Steve Shaw (909) 864-6179.**
- December 8** **Long Beach Rod & Performance Swap Meet, Veteran's Stadium, Long Beach CA (800) 762-9785.**

1997

- January 18** **Hathaway Museum Tour, 10:00 a.m. 11901 E. Florence Ave., Santa Fe Springs (310) 944-7372. Indoor collection of antique trucks and equipment. Tour the Hathaway home and view the collection of old tractors and other equipment. Admission and tours of the museum are free.**
- February 8** **SCC-ATHS Chapter Meeting, Bill Leuer's, 316 East Blaine, Riverside, CA**
- February 13-15** **SPAAMFAA National '97 Winter Convention and Muster, Hosted by Crown FireCoach Enthusiasts, E St. and Court St., Downtown San Bernardino, CA. For information contact Ron Leatz (619)243-4536.**
- March ??** **To be determined. Possible Installation Dinner.**
- April 5 or 12** **Pre Show Meeting, No host breakfast at Rocky Cola Cafe, Whittier, then then to California High School.**
- April ?** **Central California Chapter Kirkland Ranch Barbecue, Plymouth, CA.**
- May 3** **Truck Show Set-up and Barbecue**
- May 4** **Thirteenth Annual SCC - ATHS Antique Truck Show, California High School, 9800 S. Mills Ave., Whittier, CA. Show Vehicles \$10, Public Admission \$3. For information: Mark Christensen (909) 883-1955 or Ken Lund (909) 794-2616.**
- May 22-25** **American Truck Historical Society National Convention, Embassy Suites Hotel, Greens Boro, NC (205)870-0566.**



Calendar of Events

- June 14-15** ___ **Route 66/Huck Finn Festival**, Mojave Narrows Regional Park, Victorville, CA. Country music, camping, etc.
- June 21-22** ___ **Threshing Bee, Antique Engine & Tractor Show**, Antique Gas & Steam Engine Museum, 2040 N. Santa Fe Ave., Vista, California 92083 (619) 941-1791 or (800) 5-TRACTOR (587-2286)
- July 19-20** ___ **Central Coast Cooler**, Arroyo Grande, CA. Truck show and barbecue at Bob King's property near San Luis Obispo.
- August 16** ___ **5th Annual SCC-ATHS Picnic**. Los Rios Rancho, Oak Glen, CA.
- September 17** ___ **SCC-ATHS General Meeting**, Annual planning meeting at Dunkel Bros. Trucking Office, Anaheim. Meeting with viewing of collection of vintage trucks, motorcycles, Porsches, etc. Refreshments.
- Sept. 18-21** ___ **Route 66 Rendezvous**, E St. and Court St. Downtown San Bernardino, CA.
- Sept. 27 or 28** ___ **1st Annual Antique Truck Show**, Escondido Deer Park and Winery. Fantastic wooded setting with an "all convertibles" museum, gift shop, and wine tasting.
- October 4-5** ___ **Truckin' for Kids, Truck Drags**, Palmdale CA.
- October 11-12** ___ **Fortier Truck Show and Barbecue**, Fresno, CA
- October 18-19** ___ **Threshing Bee, Antique Engine & Tractor Show**, Antique Gas & Steam Engine Museum. Overnight camping and family outing. Bring your old truck and participate in the afternoon parade. 2040 N. Santa Fe Ave., Vista, California 92083 (619) 941-1791 or (800) 5-TRACTOR (587-2286)
- October 26** ___ **13th Annual Autumn Truck Run**, Tenative - Riverside to Fallbrook. Bobby Babcock's collection of vehicles and barbecue.
- November** ___ **To Be Determined.**
- December 7** ___ **Gunther's Yard Meet**, ATHS-SCC, 2380 Curry St., Long Beach, CA, Calif Thomas Bros. Map Page S, E-1. Charity fund raiser for Operation Christmas and "sneak preview" of some of the Truck Show vehicles. Food and sodas for sale. For more information contact George Gunther (310) 429-1597.

Send information about important events to: Dan Gosnell, Editor, SCC - ATHS, 5505 N. Mayfield Ave., San Bernardino, CA 92407 (909) 883-1091





SOUTHERN CALIFORNIA CHAPTER - ATHS MEMBERSHIP APPLICATION

Name _____ Date _____

Company _____

Address _____

City _____ State _____ Zip _____

Telephone _____ New Member () Renewal ()

YR MAKE MODEL BODY STYLE CONDITION

Truck(s) _____

ATHS Plastic Name Tags with logo, city and chapter	\$6.50	()
Swingers, with truck name, year, etc. _____	\$2.00	()
\$10 annual dues includes subscription to SCC-ATHS "Express Newsletter."	\$10.00	()

Send this portion with your check. Make check payable to: **Southern California Chapter-ATHS**

Ken Lund, Secretary/Treasurer, SCC - ATHS
1732 Parkview Circle
Redlands, CA 92374



ATHS NATIONAL MEMBERSHIP APPLICATION

American Truck Historical Society
P.O. Box 531168, Birmingham, Alabama 35253

Name _____ Date _____

Company _____

Address _____

City _____ State _____ Zip _____

Telephone _____ New Member () Renewal ()

YR MAKE MODEL BODY STYLE CONDITION

Truck(s) _____

\$25 annual dues includes subscription to "WHEELS OF TIME"
Send this portion with your \$25 dues. Make check payable to: **American Truck Historical Society**
American Truck Historical Society
P.O. Box 531168
Birmingham, Alabama 35253



Southern California Chapter
 1732 Parkview Circle
 Redlands, CA 92374

July 19-20 - Central Coast Cooler, Arrow Grande, CA. Truck show and picnic at Bobby Ling's property near San Luis Obispo.

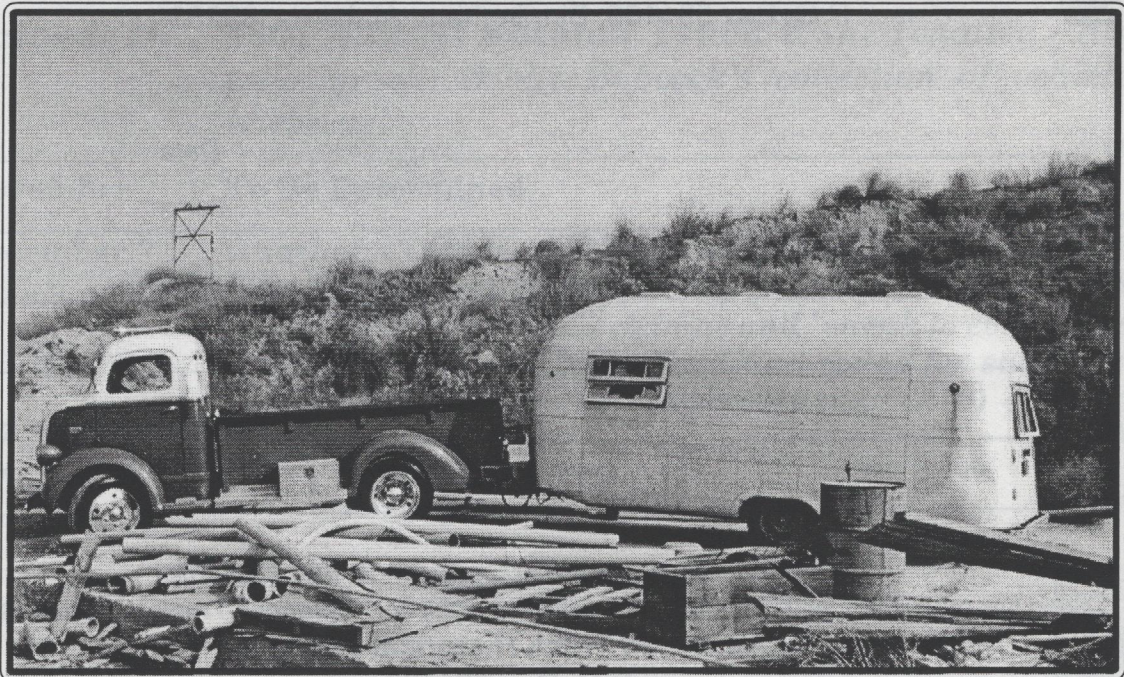
August 18 - 5th Annual SCA-ATHS Picnic, Los Rios Rancho, CA. Glen, CA.

September 17 - SCA-ATHS General Meeting, Anaheim, CA. Brox Trucking Office, Anaheim, CA.

October 4-11 - Porter, Anaheim, CA.



IF YOU HAVE ANY PROSPECTIVE MEMBERS OR A GROUP THAT YOU WOULD LIKE A NEWSLETTER SENT, PLEASE CONTACT THE EDITOR.



Sunwest Materials' 1957 Silver Streak trailer being picked up November 1996.